



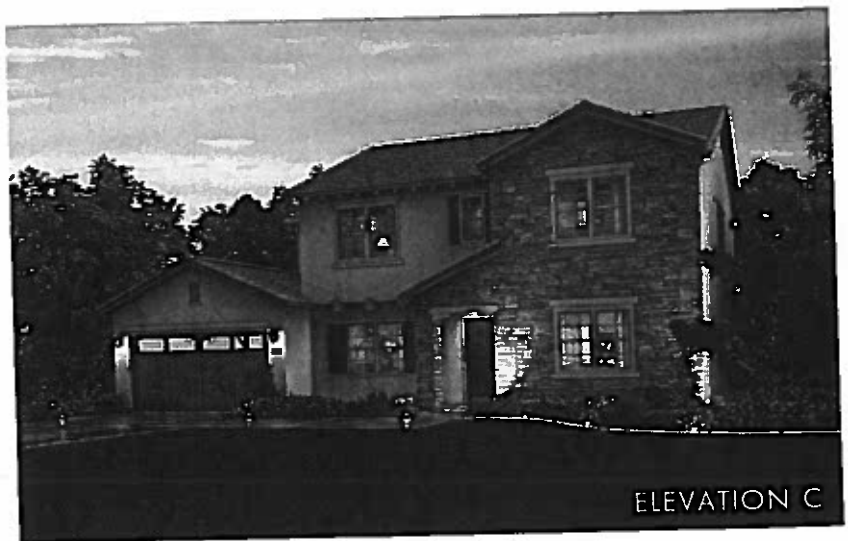
The Ridge
AT BLACKSTONE



ELEVATION A



ELEVATION B

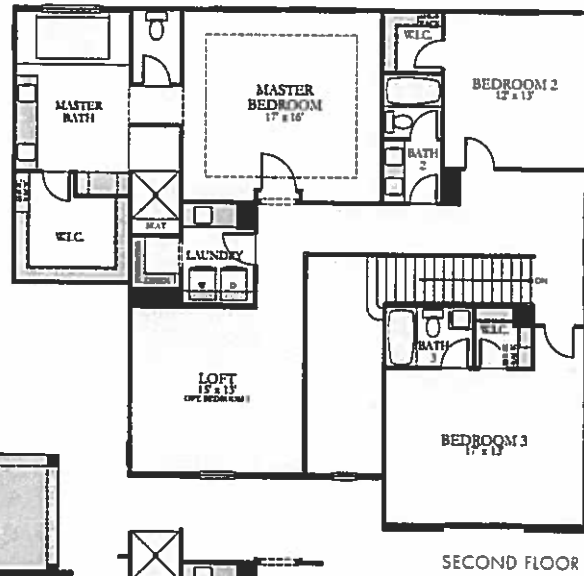
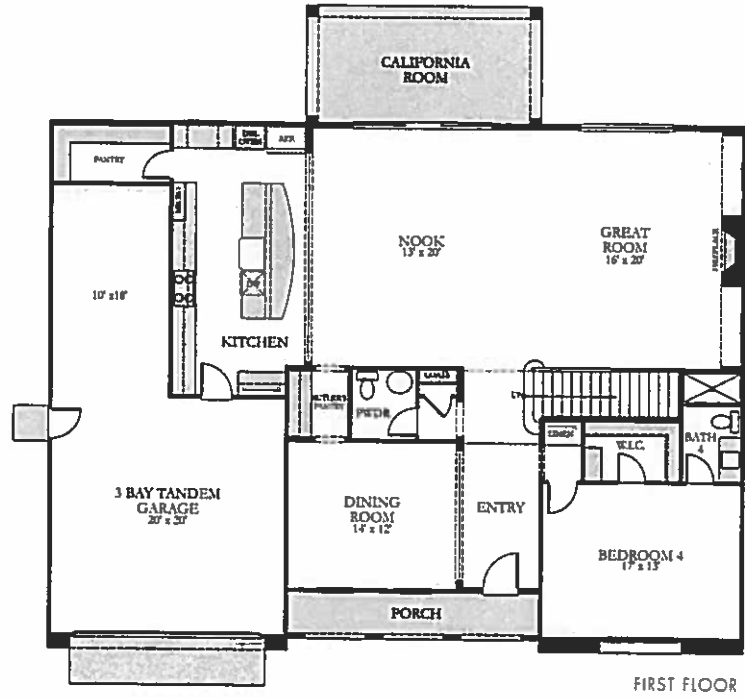


ELEVATION C

RESIDENCE 3

Approximately 3,653 Square Feet

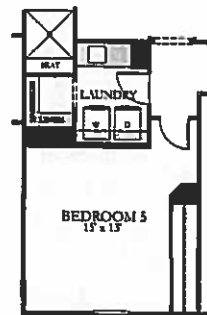
4 Bedrooms | 4.5 Baths | California Room | Loft | 3-Bay Tandem Garage



DECK
(HOMESITE SPECIFIC OPTION)



MASTER RETREAT
(HOMESITE SPECIFIC OPTION)



BEDROOM 5
(HOMESITE SPECIFIC OPTION)

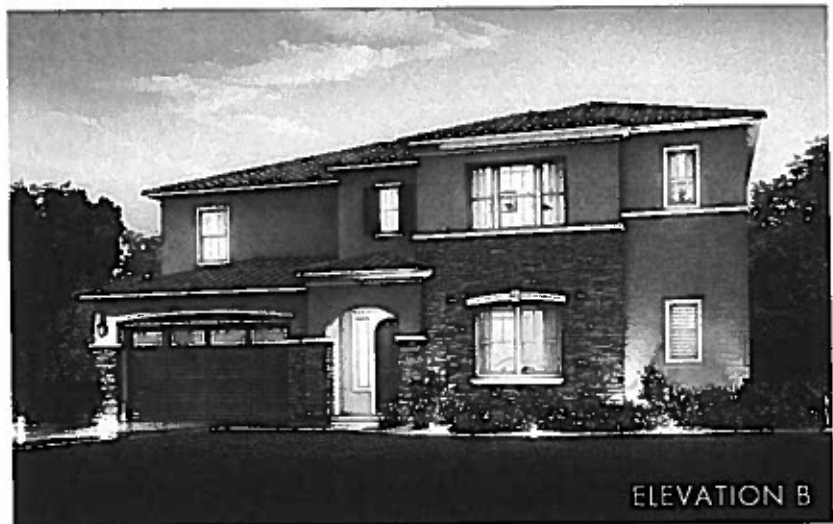
PRELIMINARY



The Ridge
AT BLACKSTONE



ELEVATION A



ELEVATION B



ELEVATION C

RESIDENCE 4

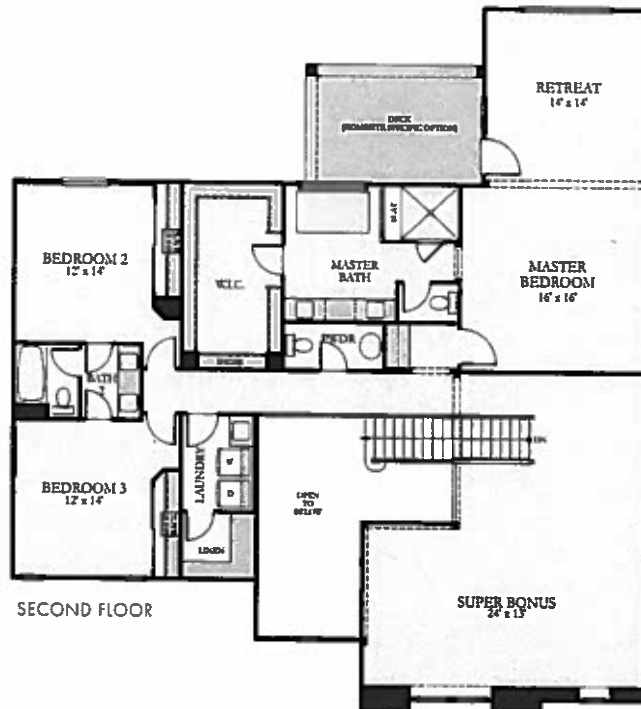
Approximately 4,041 Square Feet

5 Bedrooms or 4 Bedrooms with Den | 3.5 Bathrooms | California Room | Super Bonus Room
Master Retreat | 3-Bay Tandem Garage



FIRST FLOOR

DEN
(HOME SITE SPECIFIC OPTION)



SECOND FLOOR

PRELIMINARY



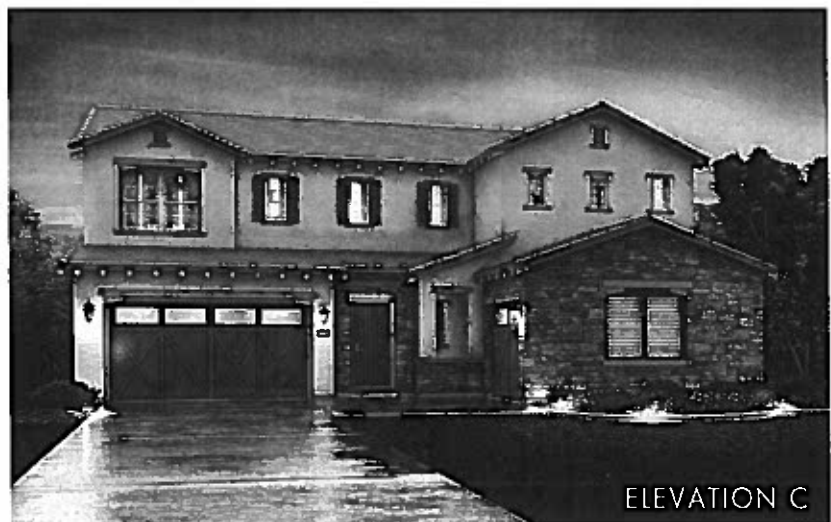
The Ridge
AT BLACKSTONE



ELEVATION A



ELEVATION B



ELEVATION C

RESIDENCE 5

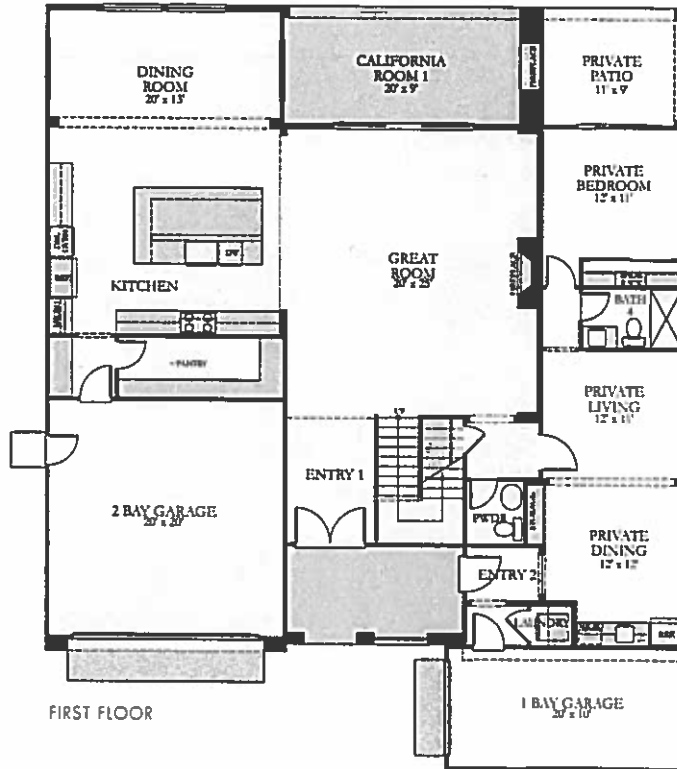
Approximately 4,253 Square Feet

MAIN HOME

4 Bedrooms | 3.5 Baths | California Room | Bonus Room | Master Retreat | 2-Bay Garage

PRIVATE SUITE

1 Bedroom | 1 Bath | Private Living Area and Kitchenette | Private Entrance | Private Patio | 1-Bay Garage



PRELIMINARY



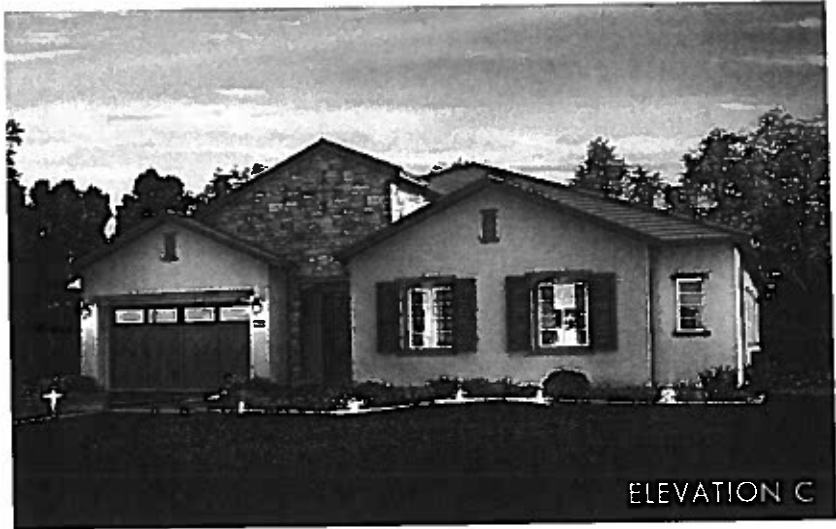
The Ridge
AT BLACKSTONE



ELEVATION A



ELEVATION B

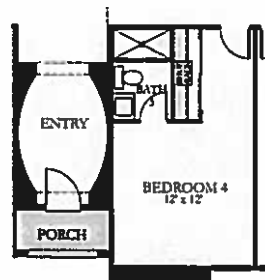
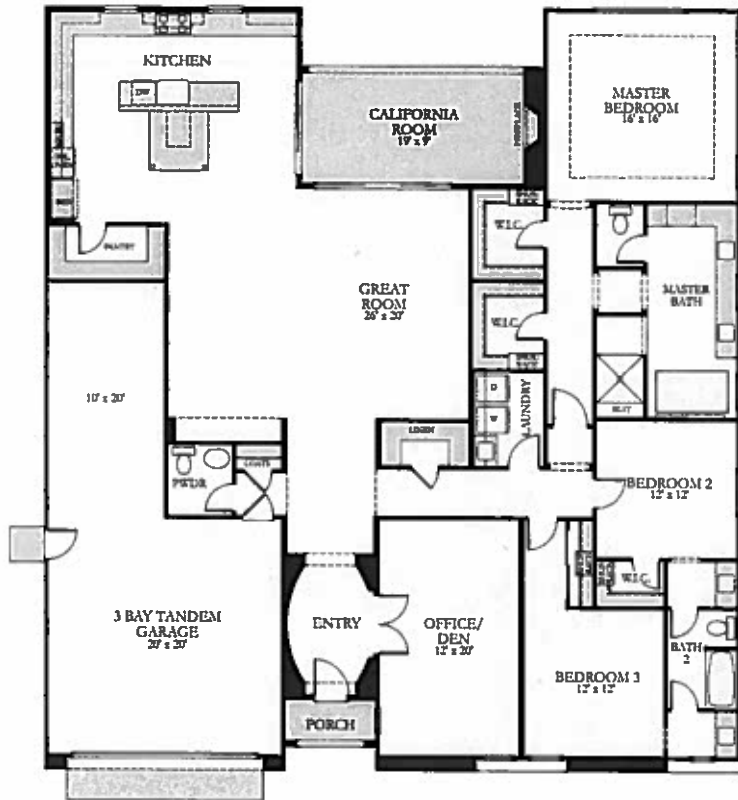


ELEVATION C

RESIDENCE 1

Approximately 2,861 Square Feet

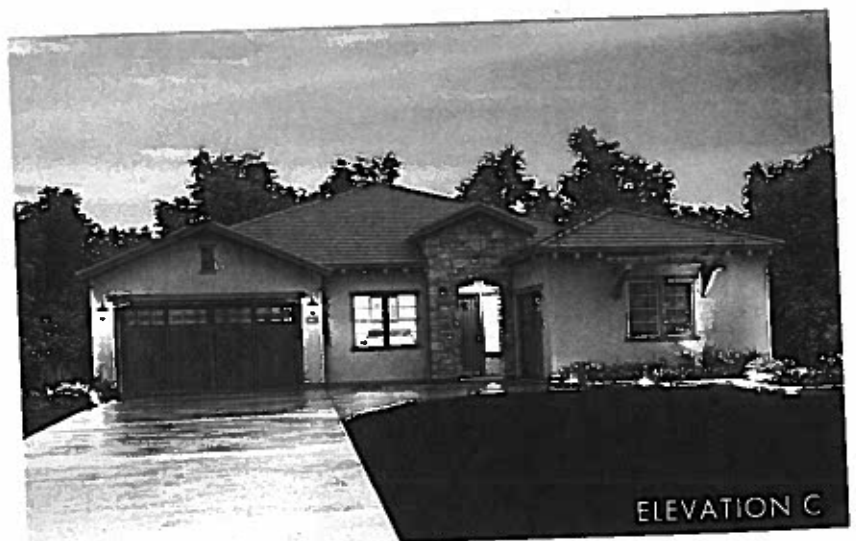
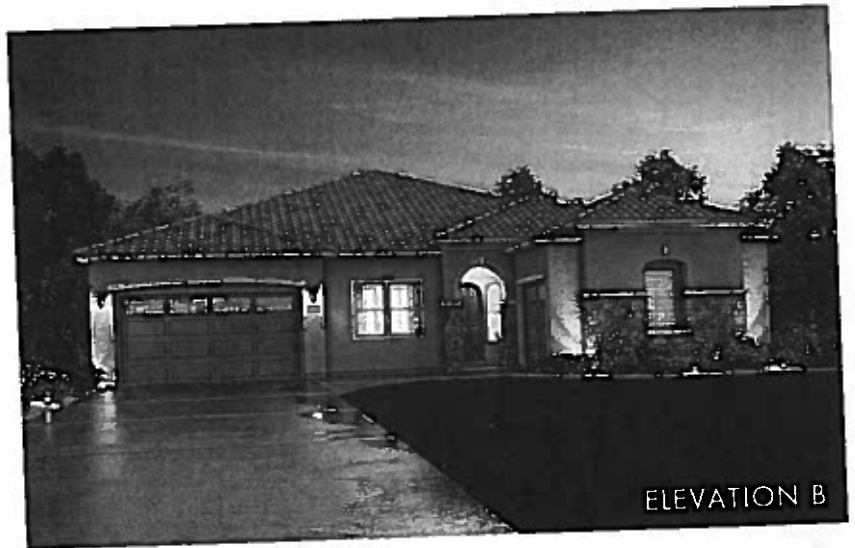
3 Bedrooms with Den or 4 Bedrooms | 2.5 - 3.5 Bathrooms | California Room
3-Bay Tandem Garage



BEDROOM 4
(SHOWSITE SPECIFIC OPTION)



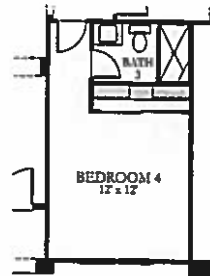
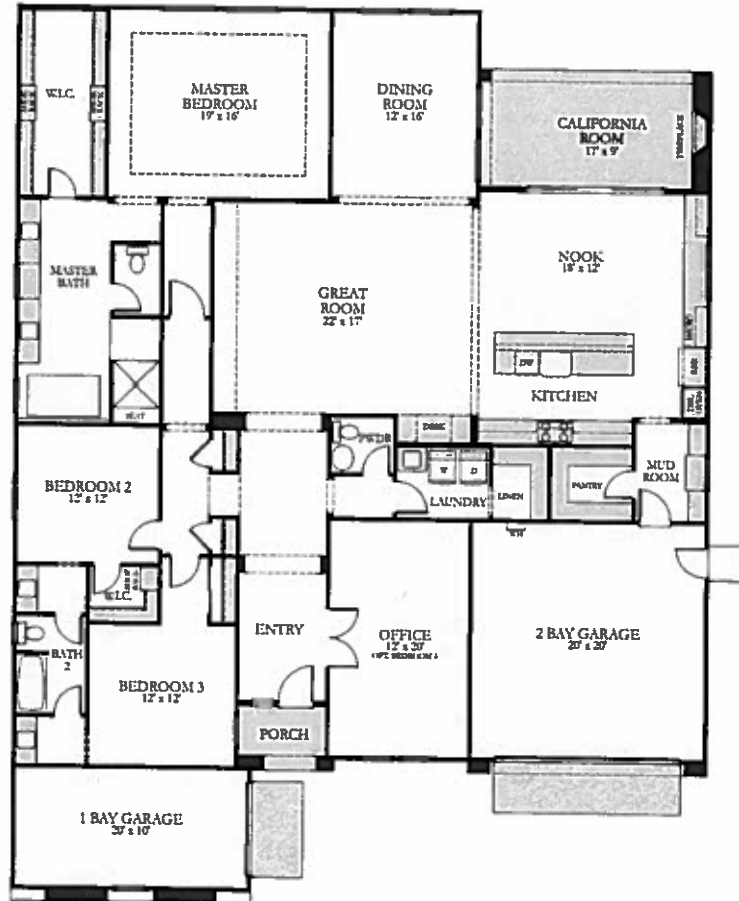
The Ridge
AT BLACKSTONE



RESIDENCE 2

Approximately 3,108 Square Feet

3 Bedrooms with Den or 4 Bedrooms | 2.5 - 3.5 Bathrooms | California Room
3-Bay Split Garage



BEDROOM 4
(HOMESITE SPECIFIC OPTION)

INCLUDED FEATURES

GREEN TECHNOLOGY

- State-of-the-art SunStreet™ energy solar system (2.65-3.18 kw, size per plan)
- Nexia™ Home Intelligence System
- Solar inverter with digital electrical output display and online monitoring
- Dual-zone heating and air conditioning with 2 digital thermostats (2-story plans)
- High performance dual-pane low-E glass windows
- Insulated exterior stucco system with foam backing
- Full exterior door weather stripping
- Insulated R-15 /R-21 exterior walls
- R-49 ceiling insulation (per plan), weighted average
- Rinnai® temperature controlled, continuous flow tankless water heater
- Water-conserving toilets, faucets, and shower heads
- Seven-day programmable automatic irrigation system with rain sensors
- Insulated air ducts
- Energy-efficient LED/fluorescent lighting
- 3rd-party energy testing
- HVAC: 14 SEER condenser, 92% AFUE furnace
- Radiant barrier roof sheathing

DISTINCTIVE EXTERIOR FEATURES

- 15 distinctive exterior elevations
- Designer coordinated exterior color and roof combinations
- Full front yard landscaping with automatic irrigation system and rain sensors

- 8' Thermo-Tru® fiberglass painted entry door; satin nickel exterior and interior hardware
- Sectional roll-up insulated garage door with windows, automatic opener and 2 transmitters
- Boral® concrete tile roofing
- Exterior light fixtures with black finish
- Taexx® (tubes in walls) pest control system
- Enhanced rear yard fencing with crowned cap
- Gas stub for future BBQ
- Holiday lights outlet and switch

EXCEPTIONAL INTERIORS

- Two-panel Cambridge-style interior doors and 5/4" Coronado baseboard
- 10'-11' ceiling height first floor; 9'-9" 6" ceiling height second floor
- Blocked, braced and pre-wired for future ceiling fan in all bedrooms, family/great room, loft/bonus room, den and California rooms, deck (per plan)
- Data and cable combo structured wiring in all bedrooms, family/great room, bonus room/loft
- Bullnose wall corners; two-tone interior paint
- 18"x18" ceramic tile flooring in entryway, kitchen, bathrooms, and laundry room
- Quality Mohawk® carpeting in family/great room, dining (per plan), bedrooms and hallways
- Gas fireplace with electric ignition switch with "tonic metal trim band"
- Sheet rocked and taped garage interior with fluorescent overhead lighting
- Speaker pre-wire surround sound in great room
- Smoke alarms; Nexia™ Home Intelligence System
- Pre-wire for 30-amp future car charger in garage

DESIGNER KITCHEN FEATURES

- Granite slab or quartz pencil edge countertops with full subway tile backsplash
- Recessed LED fluorescent lighting, under cabinet lighting, and pendant lighting at island (per plan)
- Amerisink® stainless steel single-bowl farm sink with In-Sink-Erator® disposal
- Moen® brushed nickel pull-out spray faucet
- Stainless steel GE Monogram® European-style appliance package including:
 - GE Monogram® 48" range top with six burners and grill
 - GE® 30" built-in double convection/thermal wall oven
 - GE Monogram® 4-in-1 below counter microwave oven
 - GE Monogram® 7 cycle, top controls ENERGY STAR® qualified built-in dishwasher
 - GE Monogram® 42" built-in side-by-side refrigerator with water/ice dispenser
- European-style maple or cherry raised or recessed panel cabinetry with concealed hinges, soft-close drawers, pull-out trays and brushed nickel hardware



OWNER'S SUITE

- European-style maple or cherry raised or recessed panel cabinetry with concealed hinges
- Granite or quartz (color to match kitchen) vanity top with pencil edge and 4" backsplash

- Separate walk-in shower with clear glass enclosure and 10"x24" tile surround
- Kohler® Stargaze 72"x36" rectangle free standing tub
- Moen® brushed nickel plumbing fixtures with matching bath hardware
- Large walk-in closet with high/low design shelving and shoe shelves
- Elegant vanity lighting with brush nickel finish
- Elongated comfort height porcelain toilet

SECONDARY BATHROOM FEATURES

- European-style maple or cherry raised or recessed panel cabinetry with concealed hinges
- Glacier White manufactured stone vanity top with bullnose edge and 4" backsplash
- Bathtub shower combination with Glacier White manufactured stone tub and shower surround
- Moen® brushed nickel plumbing fixtures with matching bath hardware
- Elongated porcelain toilet
- Elegant vanity lighting with brush nickel finish

LAUNDRY ROOM

- Interior laundry room with recessed can lights and stainless steel utility sink (per plan)
- 220-volt dryer outlet and gas stub
- European-style maple or cherry raised or recessed panel cabinetry over washer/dryer (per plan)



The Ridge
AT BLACKSTONE

**SPECTACULAR VIEW
HOMESITES AVAILABLE!**

