

# St. Laurent at Blackstone



**LENNAR**

3169 Aldridge Way, El Dorado Hills, CA 95762 • 916-933-4615 Phone • 916-933-6257 Fax

OUR STORY IS  
*simple*

- Quality, value and integrity since 1954
- Over 700,000 homes in more than 50 cities coast to coast
- A Fortune 200 company and listed on the New York Stock Exchange
- A full range of services including mortgage and title

**LENNAR®**

# St. Laurent Features

Consentino, Monticello, Meridian, Sterling

## EXCEPTIONAL EXTERIORS

- SolarPlus™ homes
- Covered front porches with sitting areas (per plan)
- Eight-foot entry door with aged bronze hardware and sidelight (per plan)
- Twelve distinctive exterior elevations
- Monier® Lifetile® concrete tile roofing
- Designer coordinated exterior color & roof combinations
- Full masonry detailing (per elevations)
- Sand finish at front with Spanish lace finish at side & rear
- Full front yard landscaping with automatic irrigation system
- Side yard access gate
- Broom finish driveways & walkways
- Service door from garage to rear yard
- Elegant "old world" exterior coach lights at garage and rear patios
- Rear yard underground drain system
- Ornamental style rain gutters & downspouts connected to underground drain system
- Three and four bay tandem garages with decorative overhead roll up doors (per elevation)
- "Holiday Light" outlets beneath eaves with separate switch
- Gas stub at rear yard
- 3 hose bibs

## CUSTOM-QUALITY INTERIORS

- 18" x 18" ceramic tile entry
- Rounded wall corners throughout
- Beechwood raised panel cabinetry with concealed hinges and finished interiors throughout
- Window sills with apron & stool
- 5/4" Victorian baseboards
- Brushed nickel door hardware & hinges
- Raised panel, triple hinged interior doors
- 36" majestic fireplace with precast concrete surround & decorative log kit at family room
- Rocker style and dimmer light switches throughout
- Overhead lighting in all secondary bedrooms (blocked and braced for ceiling fan)

- Interior laundry room with Beechwood raised panel cabinets, 220-volt dryer outlet & gas stub
- Granite slab counter with utility sink and Moen® Integra® faucet at laundry room
- Stain grade beechwood hand railings with painted balusters
- Finished garage with automatic opener & fluorescent overhead lighting
- Recessed lighting in dining room, great room & bonus room
- Elegant weathered iron lighting fixtures
- Quality upgraded carpeting in living room, dining room, family room, bedrooms and hallways
- Decorative 52" variable speed ceiling fan in family room and bonus room

## CONVENIENCE – FILLED KITCHENS

- Granite slab counter with 6" backsplash, full backsplash behind cooktop
- 18" x 18" ceramic tile flooring
- Beechwood raised panel cabinetry with concealed hinges, melamine finish interiors, 2 rollout shelves under cooktop and a lazy Susan at kitchen corner base
- 42" upper cabinets with adjustable shelving
- Recessed fluorescent kitchen lighting
- Under-cabinet task lighting (per plan)
- Walk-in pantry
- Kohler® stainless steel double compartment sink
- Moen® Aberdeen™ European style faucet with pull-out sprayer
- Pre-plumbed water line for refrigerator ice maker
- ISE Badger® ½ h.p. garbage disposal
- GE® Profile 36" stainless steel high performance hood
- GE® Profile 36" 5 burner stainless steel, built-in gas cooktop with cast iron grates
- GE® Profile stainless steel double oven
- GE® Profile 27" built-in stainless steel microwave
- Built-in GE® Profile stainless steel Multi-cycle Energy Star® dishwasher with Quiet Power IV
- GFI electrical outlet circuit
- Breakfast bar seating at kitchen countertop (per plan)
- Pendant lighting over breakfast bar or kitchen island

# LENNAR

The specific features in a home may vary from home to home and from one community to another. We reserve the right to substitute equipment, materials, appliances and brand names with items of equal or higher, in our sole opinion, value. Color and size variations may occur. The prices of our homes, included features, and available locations are subject to change without notice. Please see the actual home purchase agreement for additional information, disclosures and disclaimers relating to the home and its features.

Void where prohibited by law. ©2008 Lennar Inc. 6/08



LENNAR.COM



# St. Laurent Features

Consentino, Monticello, Meridian, Sterling

## MASTER SUITE

- Spacious master bedroom with dressing area
- 52" variable speed ceiling fan with light kit
- Beechwood raised panel vanity cabinets with concealed hinges
- Master bath privacy door
- Large walk-in closet with high/low design wire shelving
- Luxurious Kohler® oval Roman soaking tub with 12" x 12" tile deck
- Separate shower with clear glass enclosure & 12" x 12" tile surround and granite detailing
- Dual vanity sinks with white china finish
- Granite slab vanity tops (36" height)
- Elegant vanity lighting
- Separate water closet area with vented exhaust fan
- 18" x 18" ceramic tile flooring
- Mirrored closet doors

## LUXURIOUS BATHS

- Granite slab countertops (36" height)
- Dual vanity sinks with white china finish (per plan)
- Bathtub shower combination with 12" x 12" tile surrounds
- Moen® Eva™ faucets with Lifeshine® brushed nickel finish
- Beveled mirrored door medicine cabinets in full baths (per plan)
- Full width vanity mirrors
- Elongated porcelain toilet bowls
- Beechwood raised panel vanity cabinets with concealed hinges
- 18" x 18" ceramic tile flooring

## TECHNOLOGY, SECURITY & SAFETY

- Structured wiring system with interface panel
- Category 5 high speed telephone wire (four line capability)
- RG-6 coaxial cable & TV wiring
- Surround Sound System pre-wire in family room and bonus room
- Surround Sound System pre-wire for speakers (2) master bedroom with volume control
- Category 5 phone lines at kitchen, media niche, all bedrooms, bonus room and garage
- RG-6 cable lines at media niche, attic, all bedrooms, bonus room and garage
- Satellite System pre-wire

- Complete security system at exterior doors with motion detector and key pad, additional key pad pre-wired at master bedroom
- Schlage® Barcelona aged bronze reinforced dead bolt locks (exterior swing doors)
- Raised-panel, solid core fire door from garage
- Fire resistant Monier® Lifetile® tile roofing
- Sliding glass doors with tempered safety glass
- Smoke detectors hard-wired with battery back-up throughout
- Schlage® Torino Series lever set on interior doors
- 3 exterior GFI outlets

## STRUCTURAL INTEGRITY ASSURANCE

- "Quality Built" independent third party inspections
- Quality controlled framing system
- Steel reinforced foundations
- Engineered roof truss system
- "Quiet Floor" engineered floor joist system (per plan)
- Bonded & fastened second floor sub-flooring
- 200 amp electrical service
- Taexx® (tubes in the wall) pest control system

## ENERGY CONSERVATION FEATURES



- PowerLight SunTile® (2.3kw) Solar electric system
- Radiant barrier to reduce cooling costs
- Dual glazed Solar Ban 70 Low E glass Certainteed™ windows with energy efficient vinyl frames
- Full exterior weather stripping
- Insulated exterior stucco system
- .92 efficiency rated natural gas heating furnace
- Seven-day programmable electronic thermostat
- Dual zone central air system
- Insulated R-15/R-21 exterior walls
- R-49 ceiling insulation
- Environmentally friendly 14 SEER rated central air conditioning
- High efficiency, quick recovery gas water heater (50 gallon)
- Water conserving toilets, faucets and shower heads
- Seven-day programmable automatic irrigation system
- Insulated air ducts
- Energy efficient zero clearance fireplace
- Energy efficient lighting

# LENNAR

The specific features in a home may vary from home to home and from one community to another. We reserve the right to substitute equipment, materials, appliances and brand names with items of equal or higher, in our sole opinion, value. Color and size variations may occur. The prices of our homes, included features, and available locations are subject to change without notice. Please see the actual home purchase agreement for additional information, disclosures and disclaimers relating to this home and its features.

Void where prohibited by law. ©2008 Lennar Inc. 6/08



LENNAR.COM



# The Consentino

St. Laurent at Blackstone



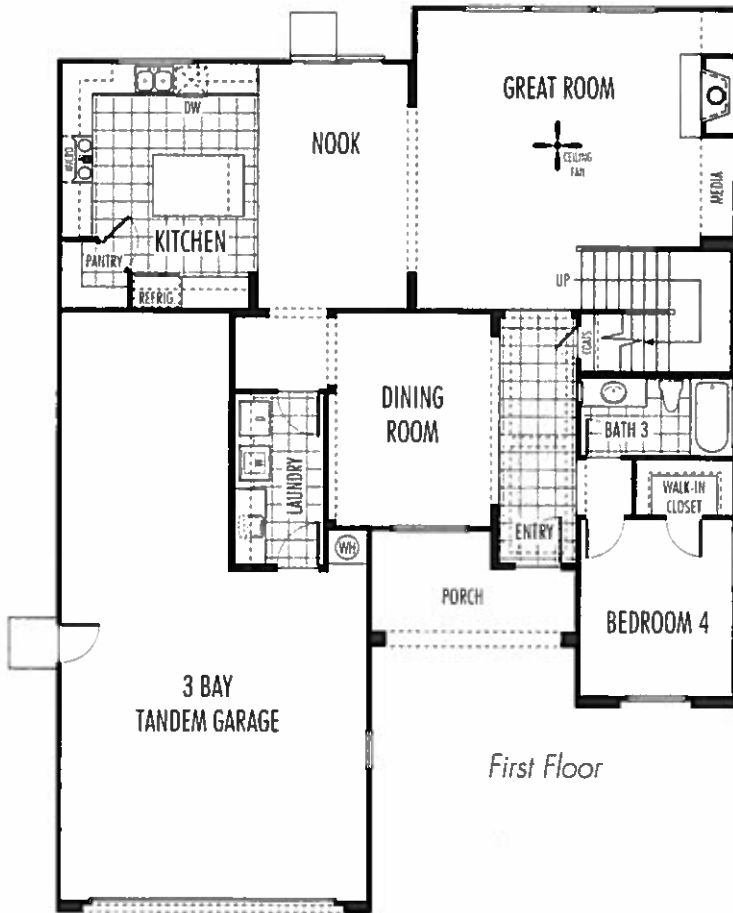
LENNAR

# The Consentino

St. Laurent at Blackstone

4 Bedrooms with Retreat | 3 Baths | Bonus Room | 3 Bay Tandem Garage

3,050 Square Feet (Approx.)



First Floor



Second Floor

## LENNAR

The specific features in a home may vary from home to home and from one community to another. We reserve the right to substitute equipment, materials, appliances and brand names with items of equal or higher, in our sole opinion, value. Color and size variations may occur. The prices of our homes, included features, and available locations are subject to change without notice. Please see the actual home purchase agreement for additional information, disclosures and disclaimers relating to the home and its features.

Void where prohibited by law. ©2008 Lennar Inc. 6/08



LENNAR.COM



# The Monticello

St. Laurent at Blackstone



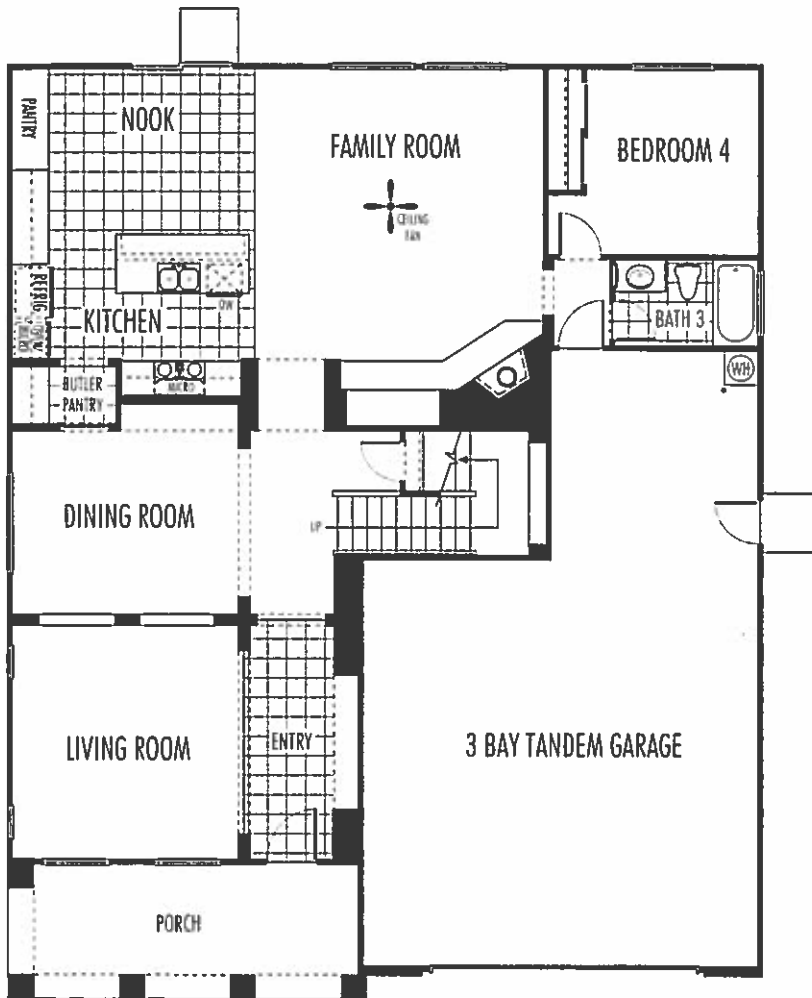
LENNAR

# The Monticello

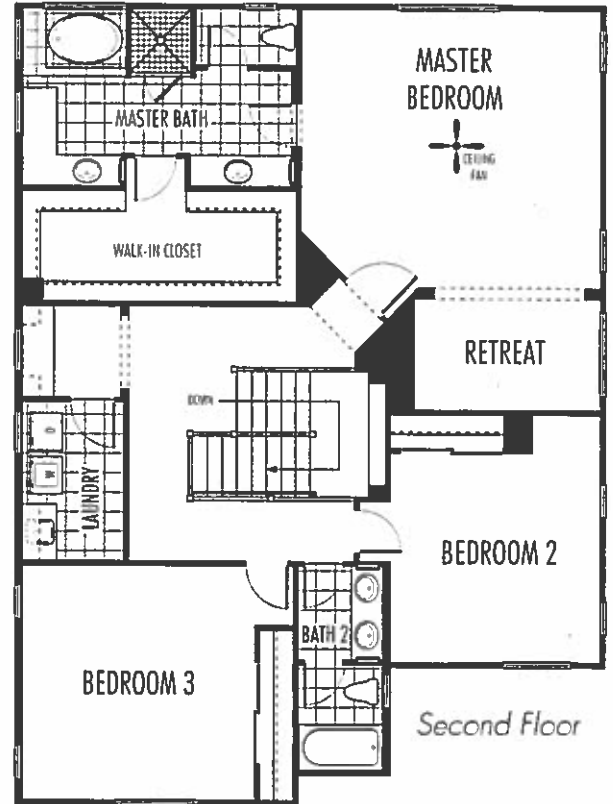
St. Laurent at Blackstone

4 Bedrooms with Retreat | 3 Baths | 3 Bay Tandem Garage

3,058 Square Feet



First Floor



Second Floor

## LENNAR

The specific features in a home may vary from home to home and from one community to another. We reserve the right to substitute equipment, materials, appliances and brand names with items of equal or higher, in our sole opinion, value. Color and size variations may occur. The prices of our homes, included features, and available locations are subject to change without notice. Please see the actual home purchase agreement for additional information, disclosures and disclaimers relating to the home and its features. Void where prohibited by law. ©2008 Lennar Inc. 6/08



LENNAR.COM





# The Meridian

St. Laurent at Blackstone



Spanish



French



Craftsman

Shown as a model.

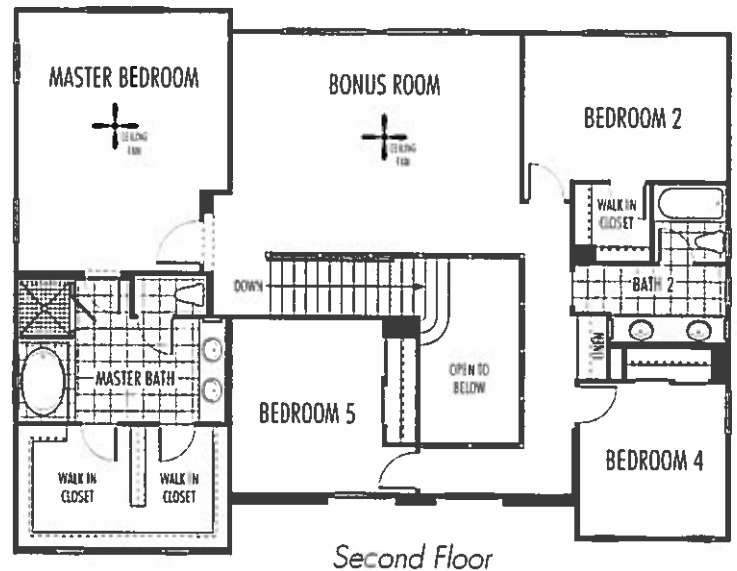
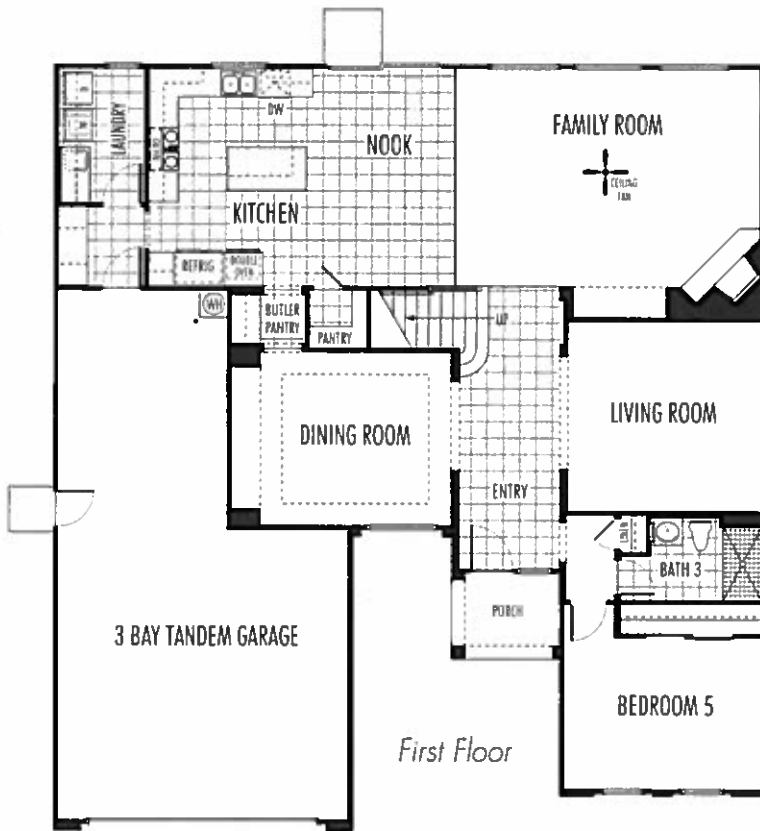
LENNAR

# The Meridian

St. Laurent at Blackstone

5 Bedrooms | 3 Baths | Bonus Room | 3 Bay Tandem Garage

3,322 Square Feet



## LENNAR

The specific features in a home may vary from home to home and from one community to another. We reserve the right to substitute equipment, materials, appliances and brand names with items of equal or higher, in our sole opinion, value. Color and size variations may occur. The prices of our homes, included features, and available locations are subject to change without notice. Please see the actual home purchase agreement for additional information, disclosures and disclaimers relating to this home and its features.

Void where prohibited by law. ©2008 Lennar Inc. 6/08

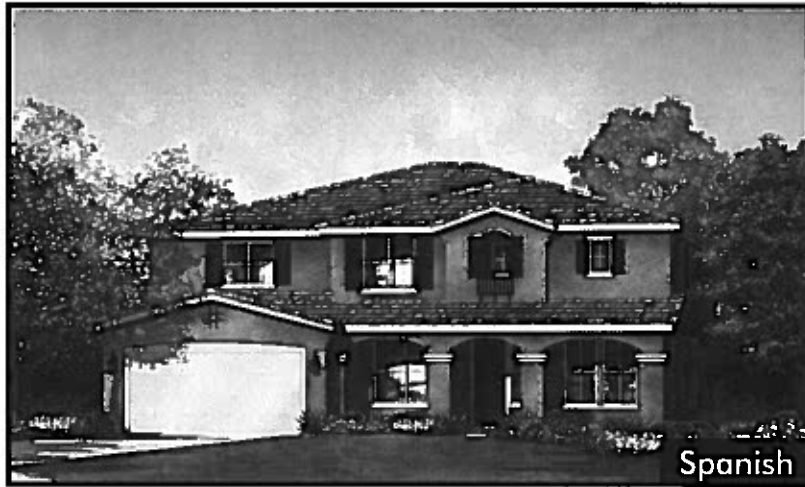


LENNAR.COM



# The Sterling

St. Laurent at Blackstone



Shown as a model.

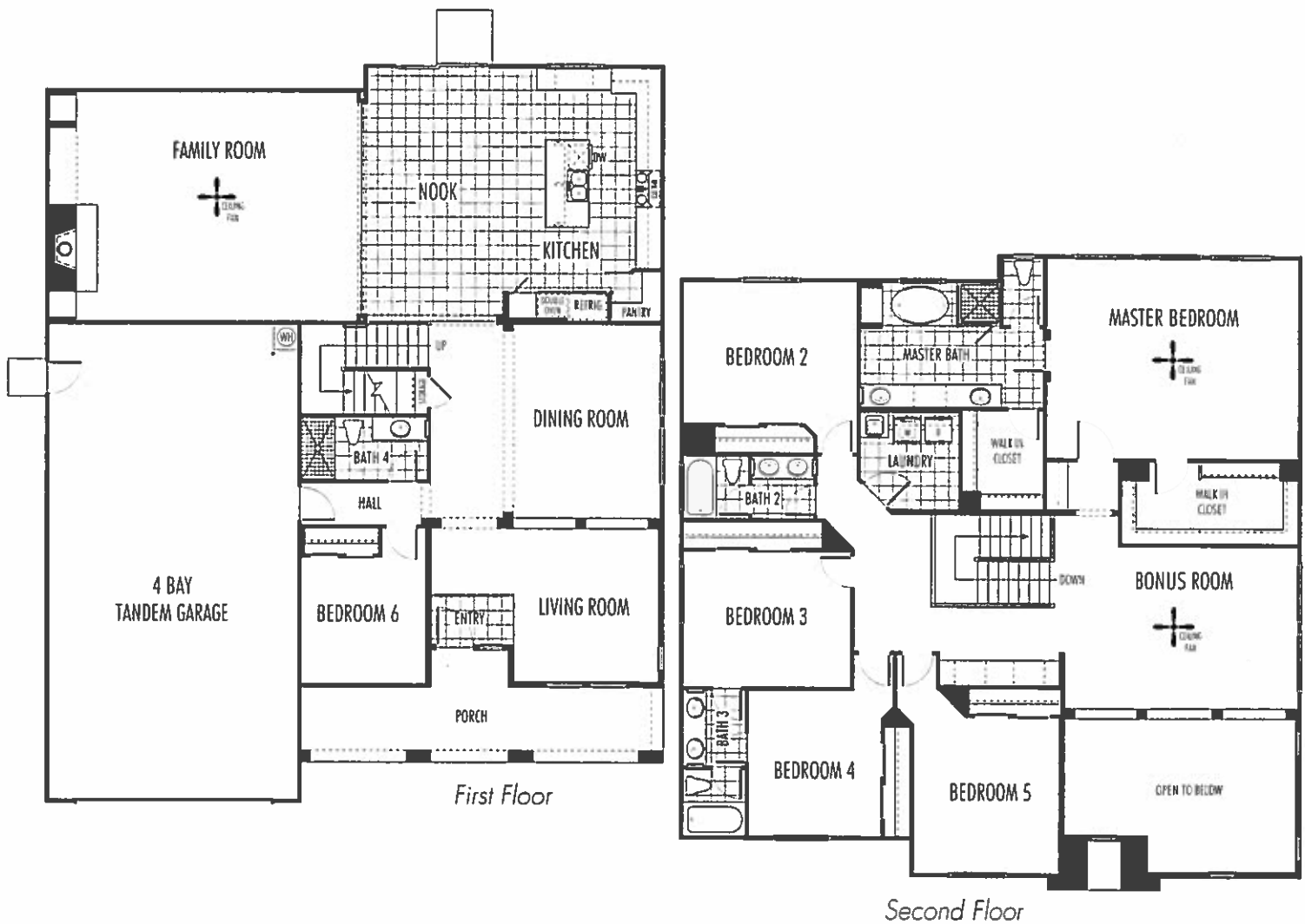
LENNAR

# The Sterling

St. Laurent at Blackstone

6 Bedrooms | 4 Baths | Bonus Room | 4 Bay Tandem Garage

3,928 Square Feet



## LENNAR

The specific features in a home may vary from home to home and from one community to another. We reserve the right to substitute equipment, materials, appliances and brand names with items of equal or higher, in our sole opinion, value. Color and size variations may occur. The prices of our homes, included features, and available locations are subject to change without notice. Please see the actual home purchase agreement for additional information, disclosures and disclaimers relating to the home and its features.

Valid where prohibited by law. ©2008 Lennar Inc. 6/08

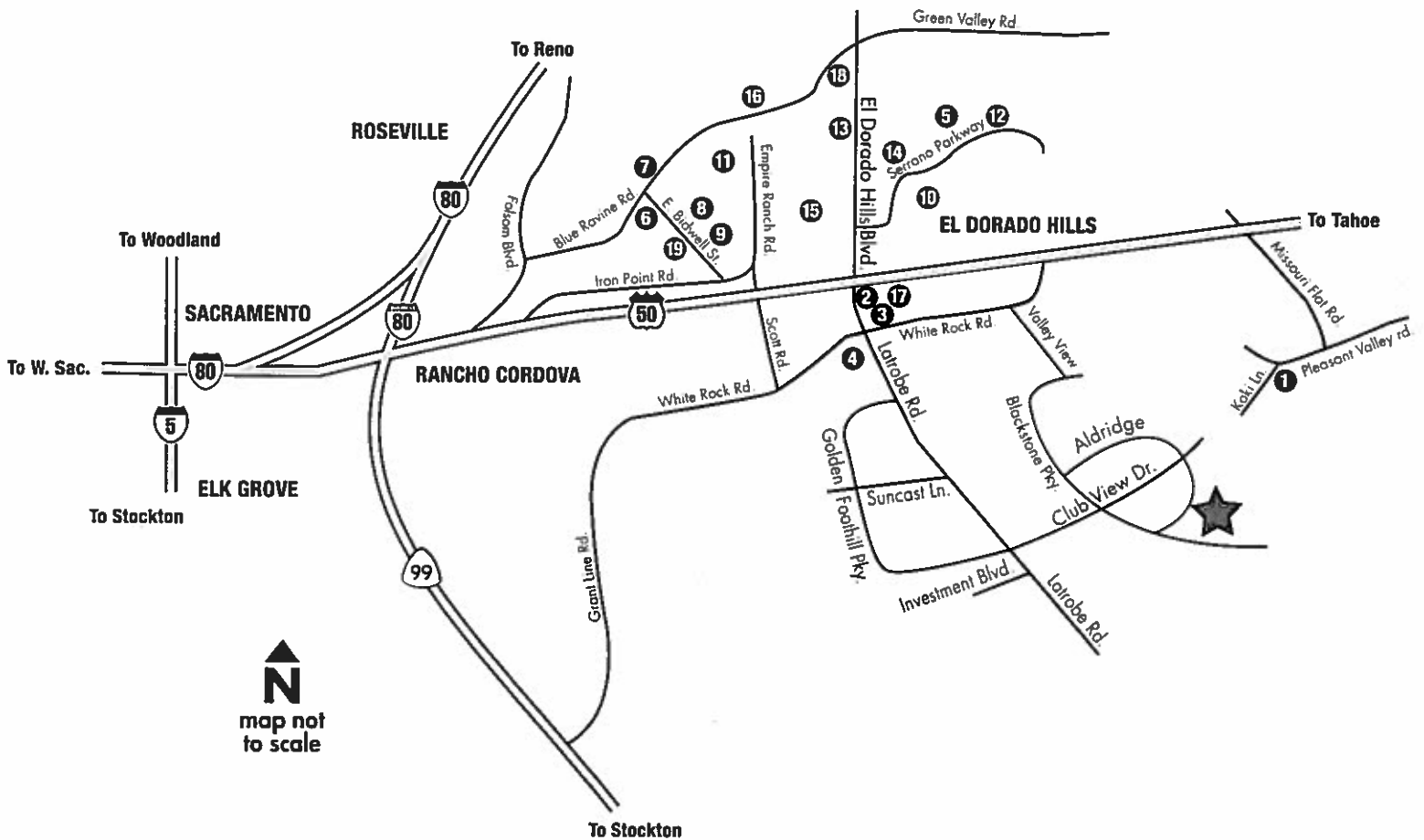


LENNAR.COM



# St. Laurent at Blackstone

## YOUR NEIGHBORHOOD



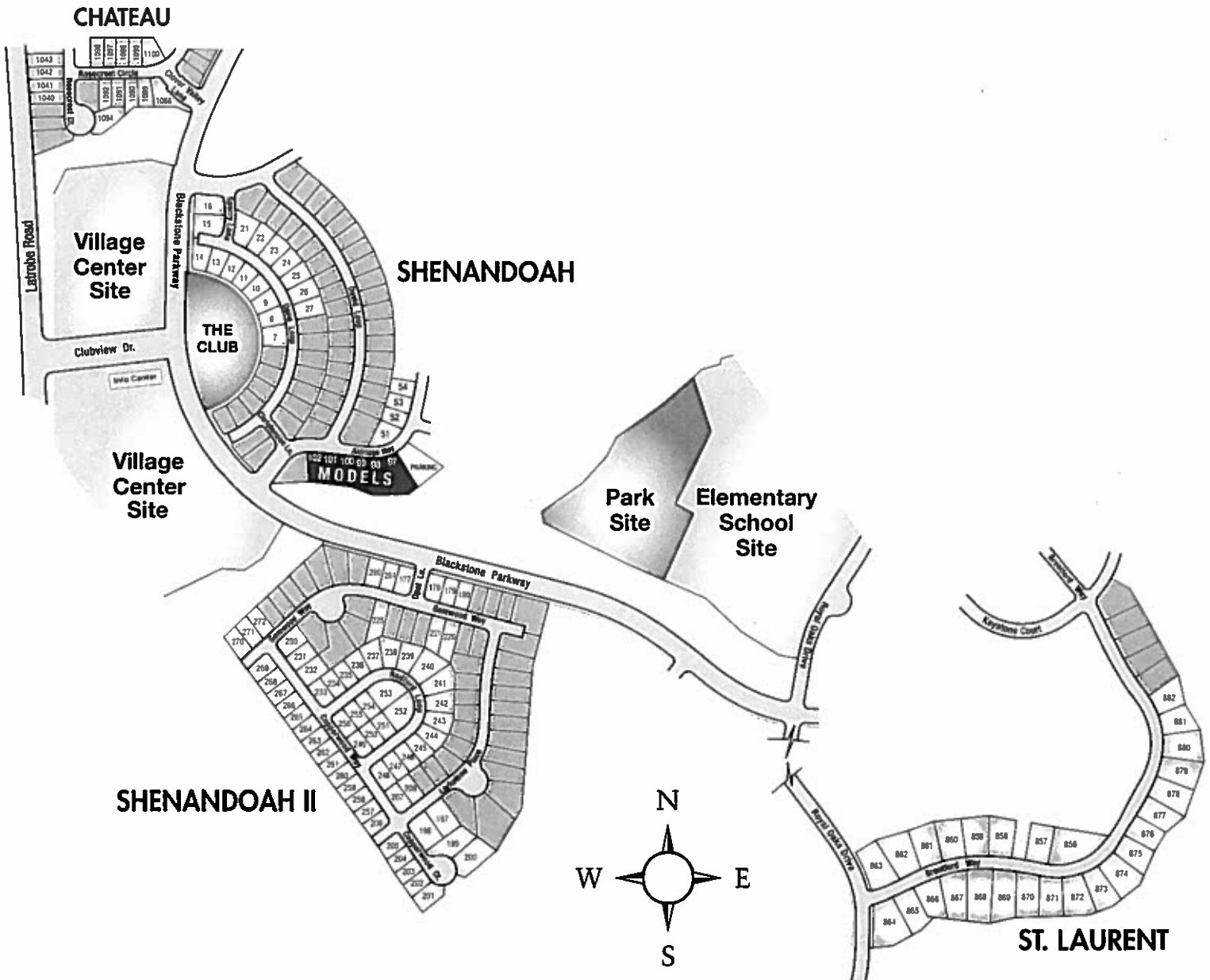
**N**  
map not  
to scale

### ★ St. Laurent at Blackstone

- |                                |                                     |
|--------------------------------|-------------------------------------|
| 1. Union Mine High School      | 11. Empire Ranch Golf Club          |
| 2. El Dorado Hills Town Center | 12. Seranno Country Club            |
| 3. US Post Office              | 13. Reid White Park                 |
| 4. Marshall Medical Center     | 14. Village Green Park              |
| 5. Mercy Hospital of Folsom    | 15. Ridgeview Park                  |
| 6. Walmart                     | 16. Folsom Zoo/Folsom City Park     |
| 7. Target                      | 17. Spare Time Club                 |
| 8. Home Depot                  | 18. Curves                          |
| 9. Lowe's                      | 19. Folsom Health & Wellness Center |
| 10. El Dorado Hills Golf Club  |                                     |

# St. Laurent at Blackstone

## COMMUNITY MAP



# LENNAR

3169 Aldridge Way, El Dorado Hills, CA 95762 • 916-933-4615 Phone • 916-933-6257 Fax

The specific features in a home may vary from home to home and from one community to another. We reserve the right to substitute equipment, materials, appliances and brand names with items of equal or higher, in our sole opinion, value. Color and size variations may occur. The prices of our homes, included features, and available locations are subject to change without notice. Please see the actual home purchase agreement for additional information, disclosures and disclaimers relating to the home and its features.

View where prohibited by law. ©2008 Lennar Inc. 6/08



LENNAR.COM

