

# Ever seen a whole community of really smart homebuyers?

Great homes should do a lot, including lowering your energy bills. Every home we build is ENERGY STAR® certified, which means you get to spend more on the things you like, instead of high utility bills.



Setting the standard for energy-efficient homes.

877-275-6374 | [meritagehomes.com](http://meritagehomes.com)

For showings or more information:

**MENSER**  
REAL ESTATE GROUP

Donna & Stephani Menser

(916) 289-9866

[EDHrealtor.com](http://EDHrealtor.com)



# Solstice

## The Northern California Collection

5565 ASPEN MEADOWS DRIVE  
EL DORADO HILLS, CA 95762  
877-275-6374

### Exterior Design Features

- Beautiful elevations with stone or brick accents (per plan) and complementary designer-selected paint
- Complementing antique bronze exterior lights at garage
- Fiberglass 6 panel entry Thermatru<sup>®</sup> insulated door with Kwikset<sup>®</sup> venetian bronze SmartKey handle set
- Metal pressed steel Carriage House style sectional garage door(per plan) with 2 transmitters at 2-bay door
- Full front yard landscaping
- Covered porches styled per elevation
- 3 or 4 bay garages per plan

### Interior Design Features

- Large great rooms that open to the kitchen
- Convenient pocket offices with wood desk top
- Unique details like arches, ledges and niches
- Ceramic tile floors
- Beautiful 5 1/2" colonial style base trim
- Designer-selected Frazee<sup>®</sup> interior paint
- Kwikset<sup>®</sup> brushed nickel door hardware
- Two-panel 8' interior doors
- Piedrafina countertops and tub/shower walls in secondary baths
- Elegant brushed nickel Progress<sup>®</sup> interior lights
- Standard railing system with handrail and balusters per plan

### Luxurious Master Suites

- Spacious walk-in closets
- Five-piece bath includes drop-in Jacuzzi<sup>®</sup> soaker tub with Piedrafina walls, tub deck and 12" splash
- Clear safety glass enclosed shower with satin chrome trim and Piedrafina surround
- Upgraded Moen<sup>®</sup> Eva brushed nickel faucets
- Designer brushed nickel lighting fixtures
- Piedrafina countertops with top mount porcelain bowls
- Private water closet with conserving commode
- Fully recessed 24" frameless medicine cabinet

### Spacious Kitchens

- Slab granite countertops with full height backsplash behind cooktop and 6" in other areas
- Timberlake<sup>®</sup> Tahoe maple cabinets with 42" staggered uppers
- Whirlpool<sup>®</sup> stainless steel appliances include 36" gas cooktop with canopy hood and micro/oven combo
- Large prep/eat-at islands
- 5 1/3 HP Badger<sup>®</sup> garbage disposal
- Under mount stainless steel Amerisink<sup>®</sup> with Moen<sup>®</sup> brushed nickel single-lever faucet and pull-out

### Quality Construction

- Industry leading spray-foam insulation
- 90% high efficiency furnace
- 50 gallon hot water heater
- Perimeter drain system around house
- Engineered quiet flooring system
- Cat 5 phone lines to kitchen, great room, master bedroom, and pocket office
- RG6 cable runs at master bedroom, great room, and pocket office
- 200 amp electrical service
- Gas line at laundry room
- 28" structured wiring termination box in master closet

### Energy-Efficient and Safety Features

- SunPower<sup>®</sup> 2.3kW Solar System
- Spray-foam insulation for energy savings and better health
- Low-E3 windows for 15% less heating/cooling costs
- LED lighting uses less energy and emits more light
- ENERGY STAR<sup>®</sup> appliances for lower energy costs
- Fresh-air management system for clean, fresh air circulation
- Minimum SEER 14 HVAC helps save energy and money
- Conditioned attic helps seal out particulates, rodents and noise
- Water-efficient fixtures save water and maintain water pressure
- Dual-flush toilets save water and lower costs
- PEX<sup>®</sup> plumbing is more resistant to freeze breakage
- Weather-sensing irrigation saves water and money
- Minimum Merv 8 filtration helps minimize indoor particulates
- Low-to-zero VOC paints, finishes, and carpets allow for better indoor air quality
- Jump duct at master bedroom helps equalize pressure

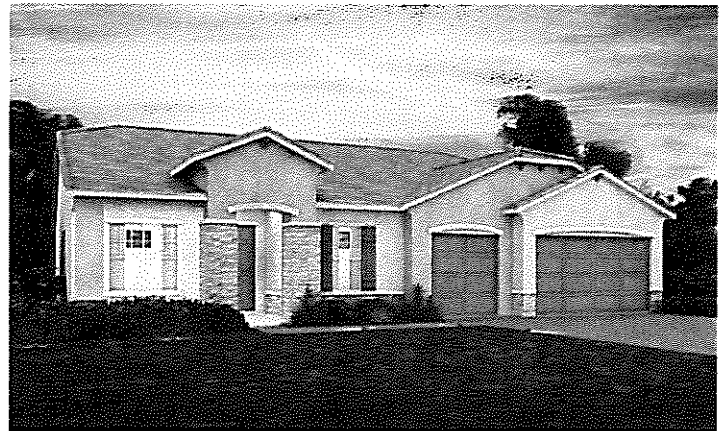
SOLSTICE

5571 Aspen Meadows Drive  
El Dorado Hills, CA 95762  
877 275 6374

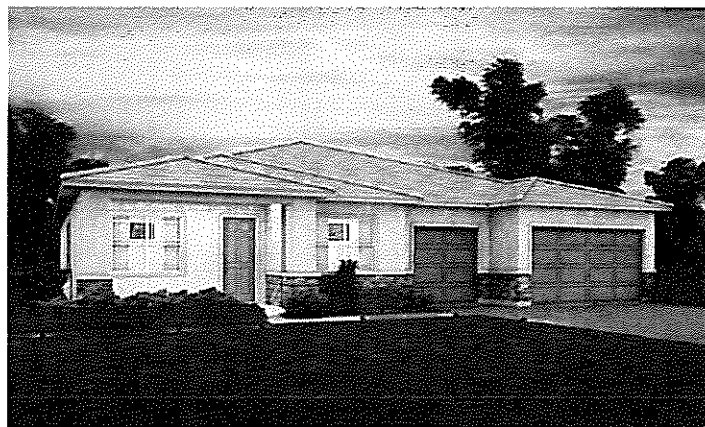
THE EMERSON  
3,104 SQUARE FEET  
4 BED • 3 BATH • DINING • DEN • 3 BAY GARAGE



Elevation A



Elevation G

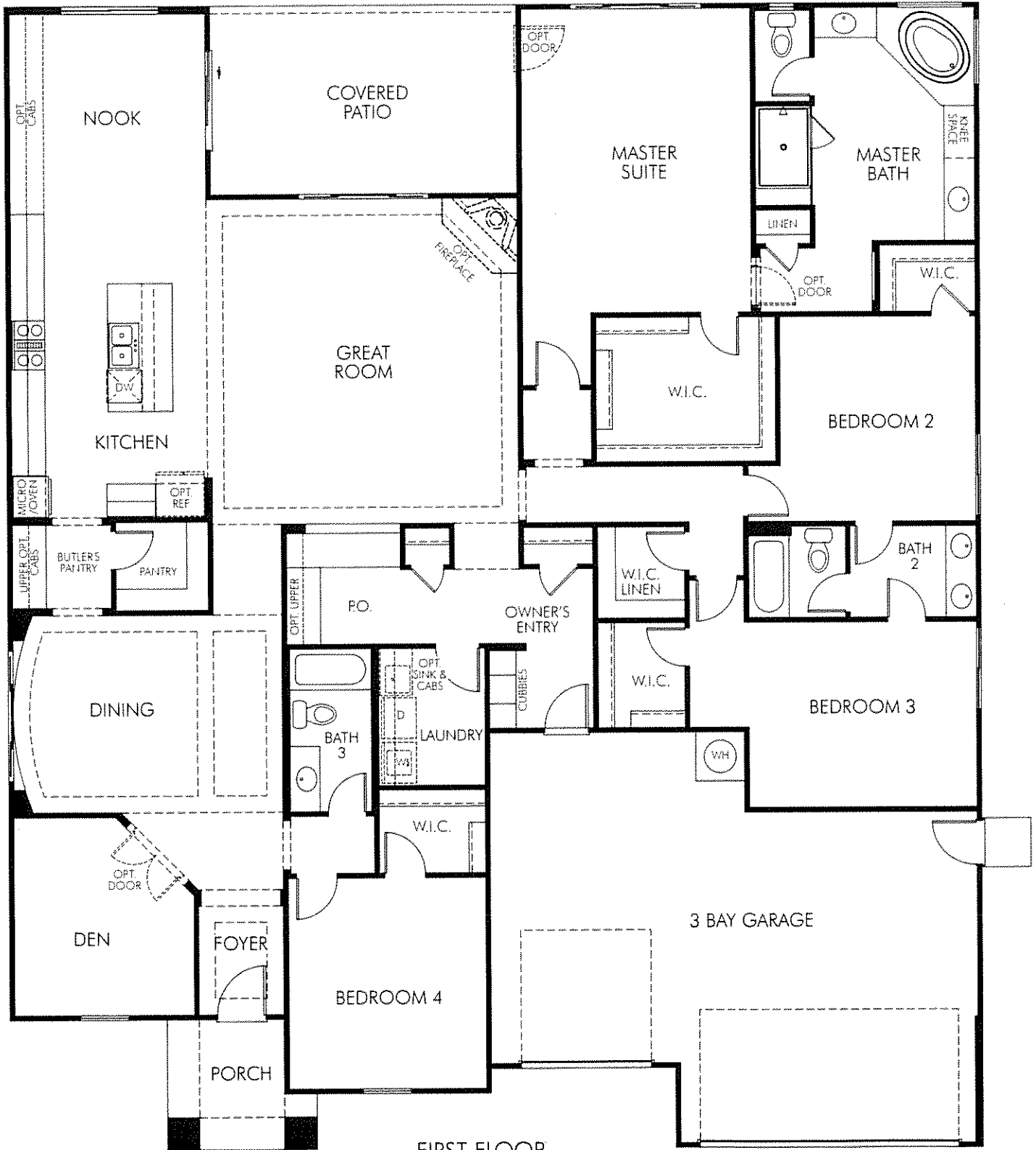


Elevation H

# SOLSTICE

## THE EMERSON

### FIRST FLOOR



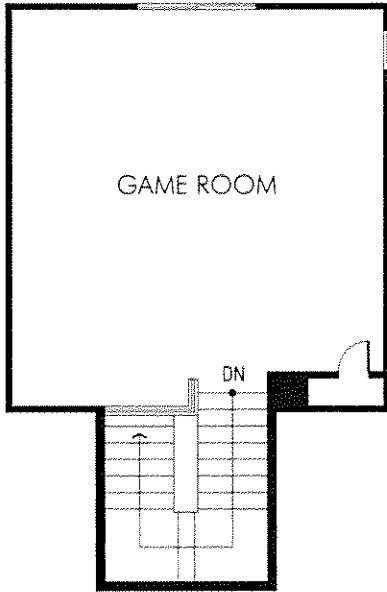
FIRST FLOOR

# SOLSTICE

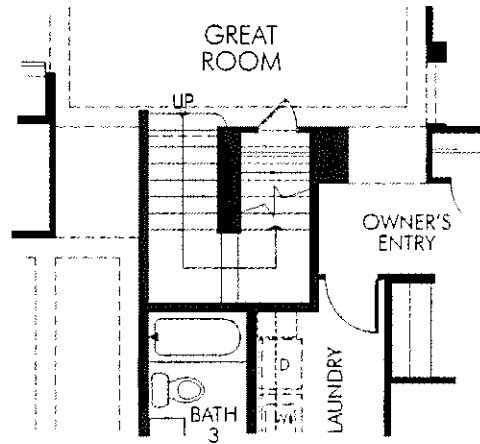
## THE EMERSON

### OPTIONAL SECOND FLOOR

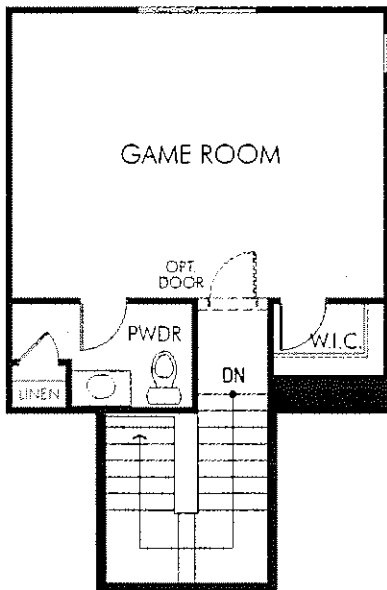
---



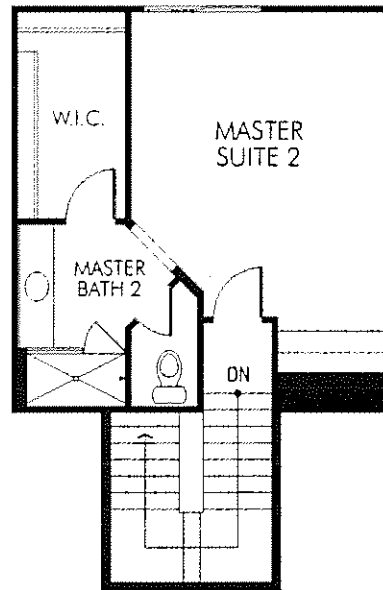
OPT. SECOND FLOOR  
GAME ROOM



STAIRS WITH OPTIONAL  
SECOND FLOOR



OPT. SECOND FLOOR  
GAME ROOM  
WITH POWDER/W.I.C.



OPT. SECOND FLOOR  
MASTER SUITE 2



SOLSTICE

5571 Aspen Meadows Drive  
El Dorado Hills, CA 95762  
877 275 6374

**THE BRADBURY**  
3,246 SQUARE FEET

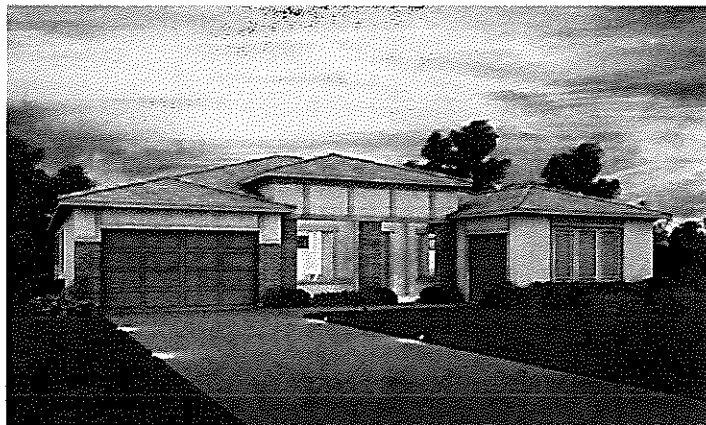
4 BED • 3.5 BATH • DEN • DINING • LIBRARY • 3 BAY SPLIT GARAGE



Elevation A



Elevation G

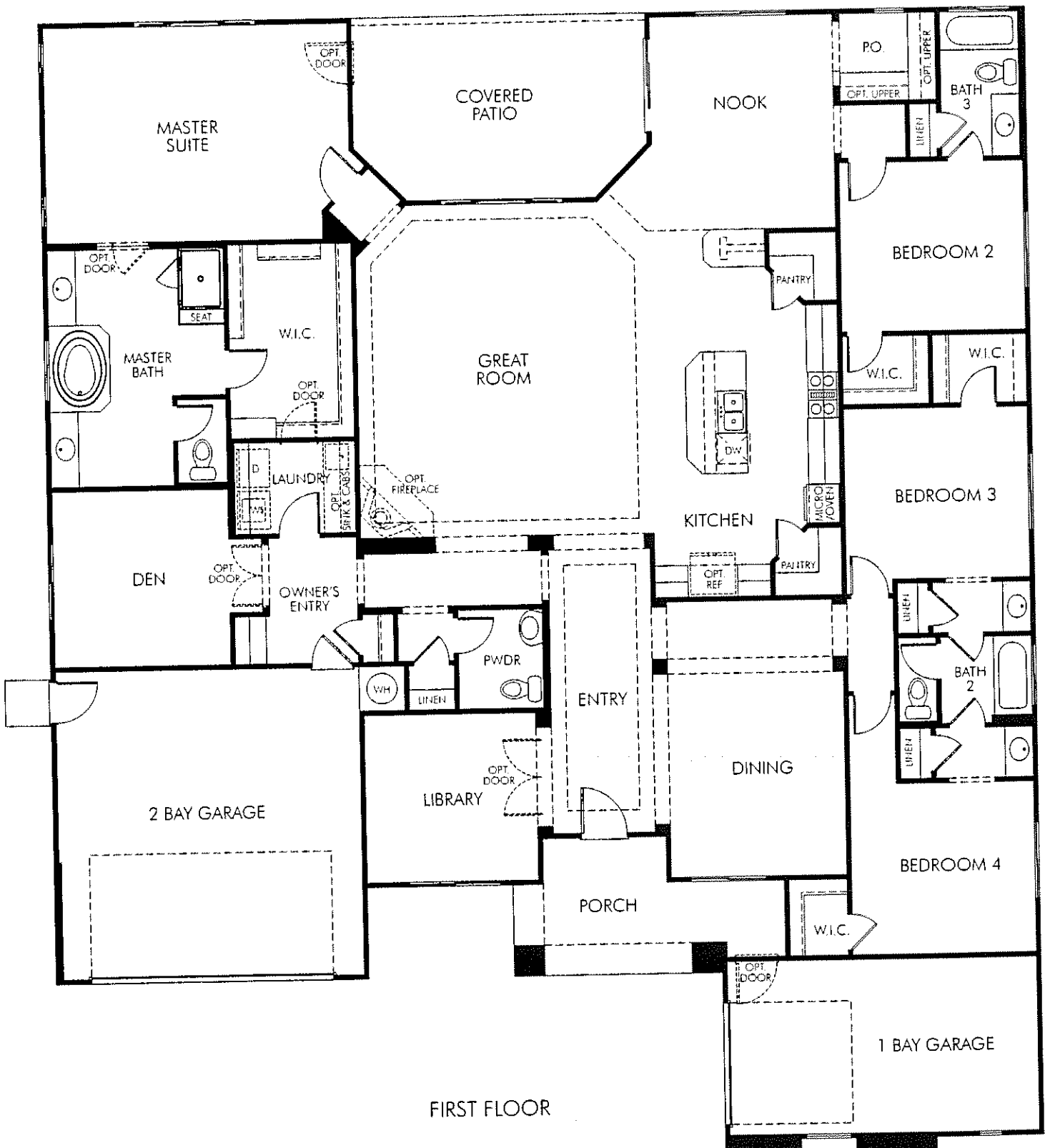


Elevation H

# SOLSTICE

## THE BRADBURY

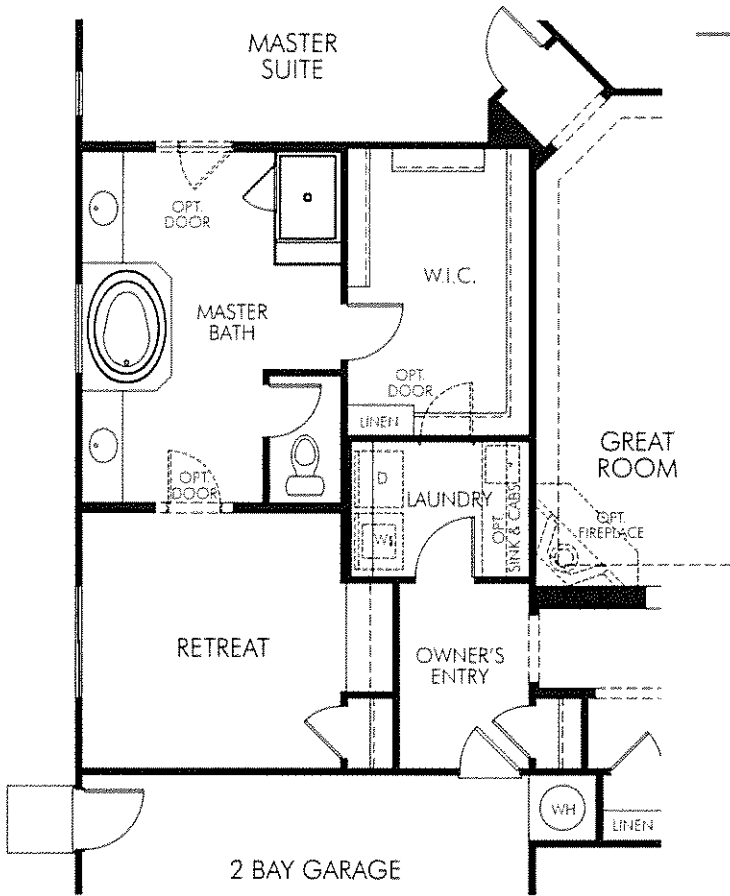
### FIRST FLOOR



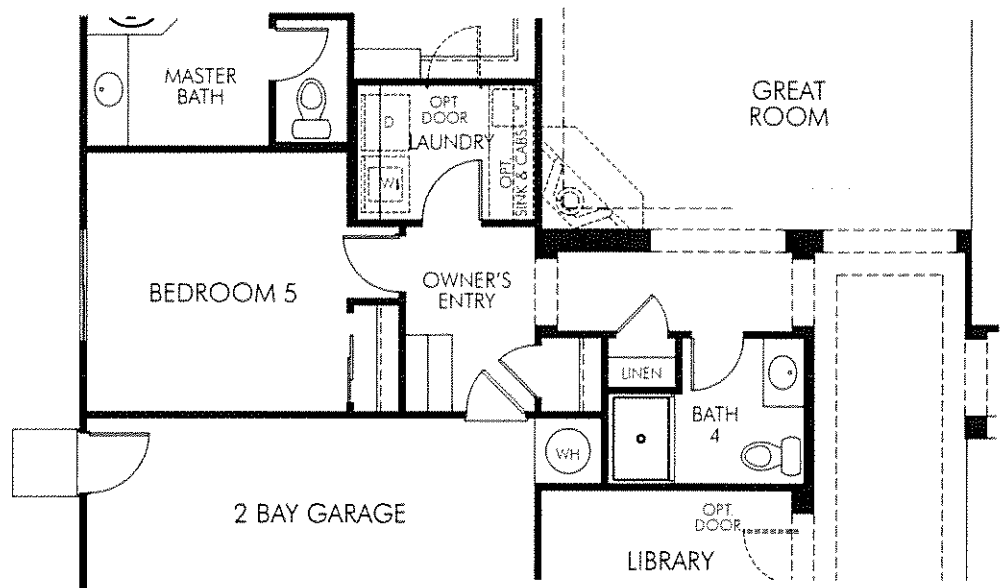
FIRST FLOOR



# SOLSTICE THE BRADBURY OPTIONS



OPT. MASTER RETREAT  
ILO DEN



OPT. BEDROOM 5/BATH 4  
ILO DEN/POWDER

COLSTICE

5571 Aspen Meadows Drive  
El Dorado Hills, CA 95762  
877 275 6374

## THE ALCOTT

3,632 SQUARE FEET

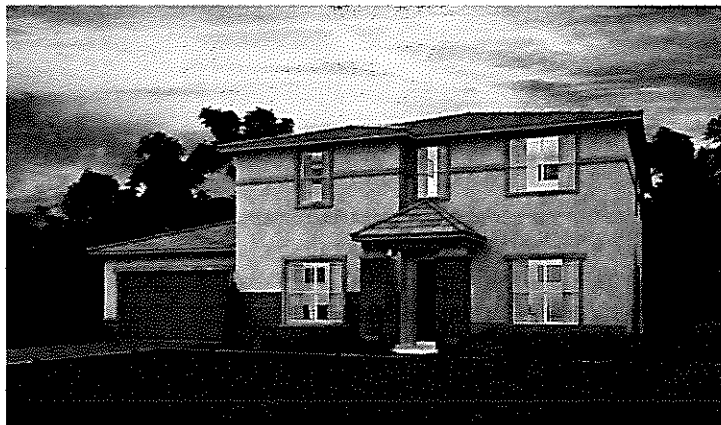
4 BED • 3.5 BATH • DINING • DEN • LOFT • 4 BAY TANDEM GARAGE



Elevation A



Elevation G



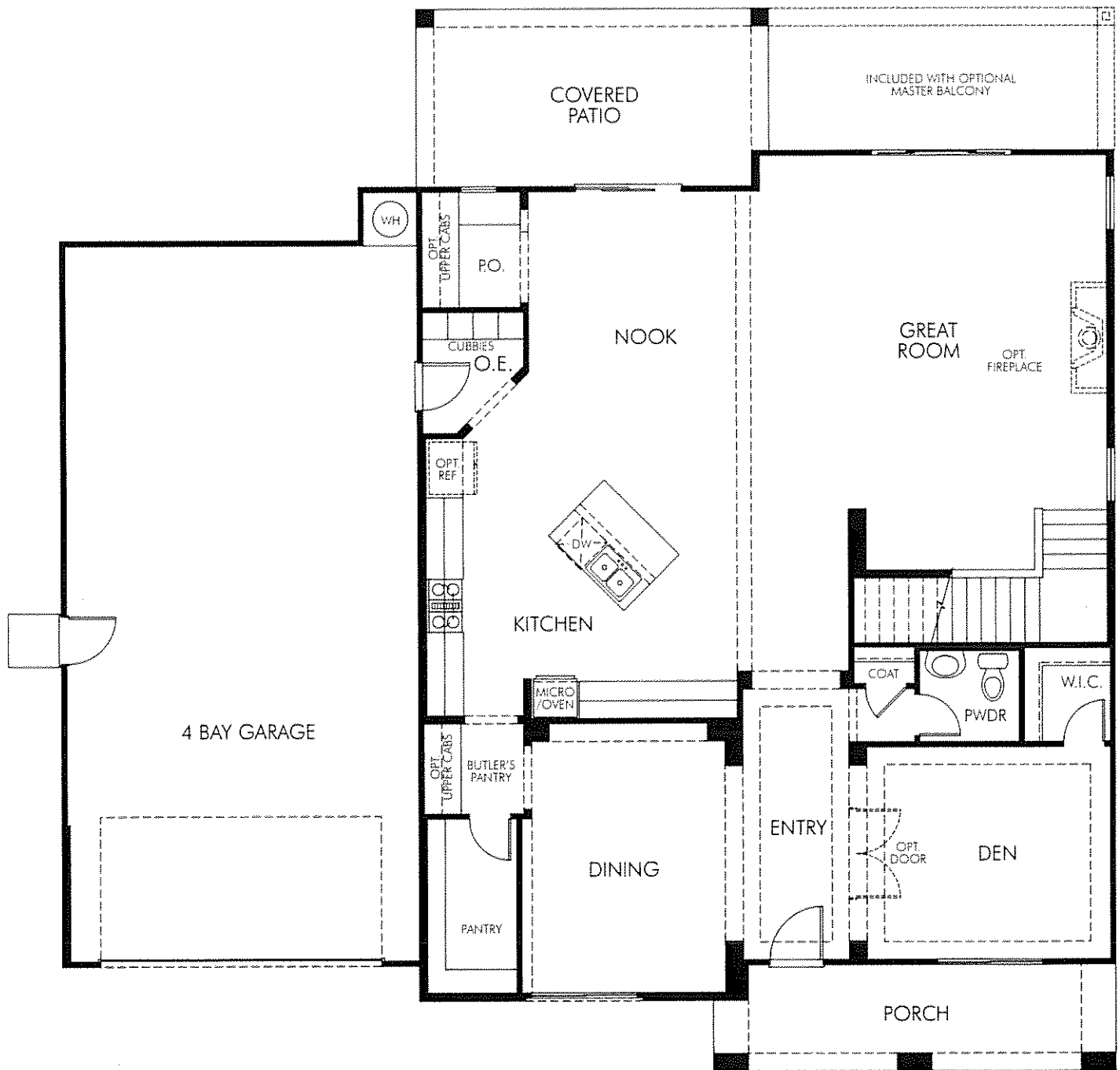
Elevation H

# SOLSTICE

## THE ALCOTT

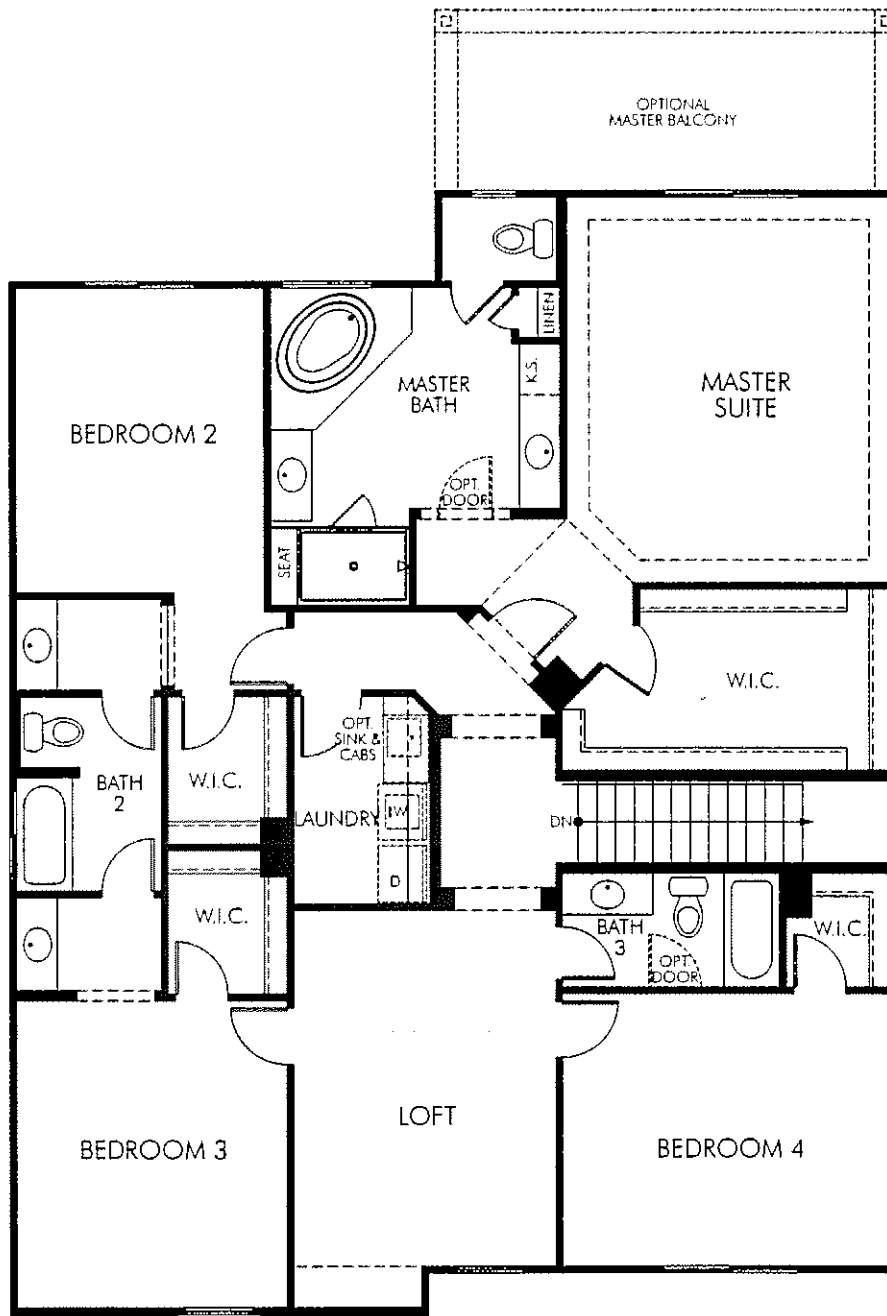
### FIRST FLOOR

---



FIRST FLOOR PLAN

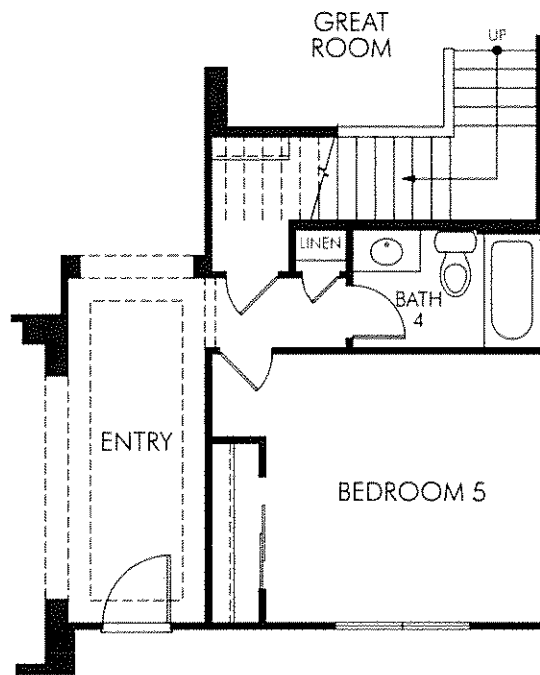
**SOLSTICE**  
THE ALCOTT  
SECOND FLOOR



SECOND FLOOR

# SOLSTICE THE ALCOTT OPTIONS

---



OPT. BEDROOM 5  
ILO DEN

5571 Aspen Meadows Drive  
El Dorado Hills, CA 95762  
877 275 6374

COLSTICE

# THE HEMINGWAY

4,202 SQUARE FEET

5 BED • 5.5 BATH • DINING • SIDE COURTYARD • DEN • 4 BAY TANDEM GARAGE



Elevation A



Elevation G



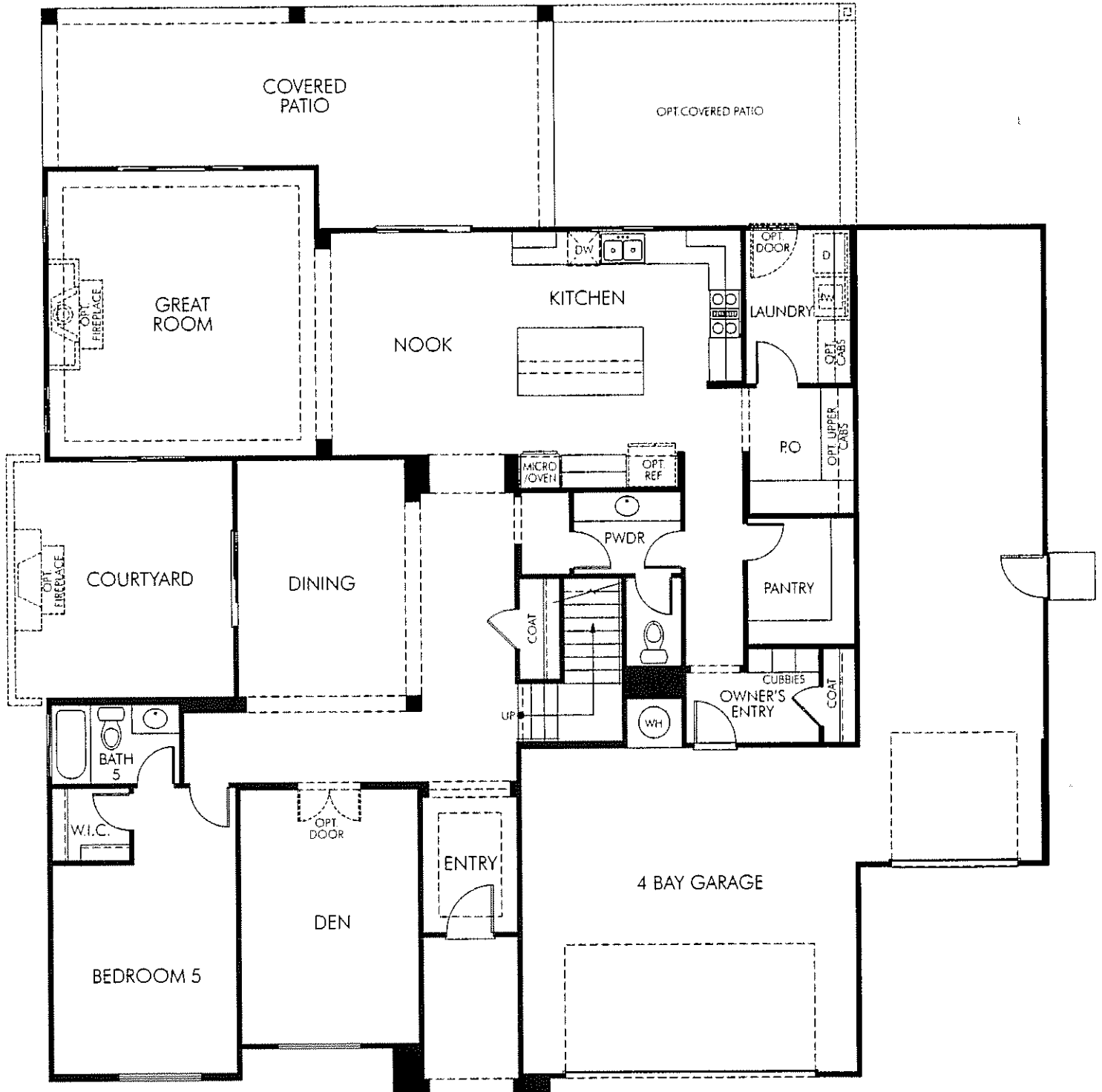
Elevation H

# SOLSTICE

## THE HEMINGWAY

### FIRST FLOOR

---



FIRST FLOOR

**SOLSTICE**  
THE HEMINGWAY  
SECOND FLOOR

---



SECOND FLOOR PLAN

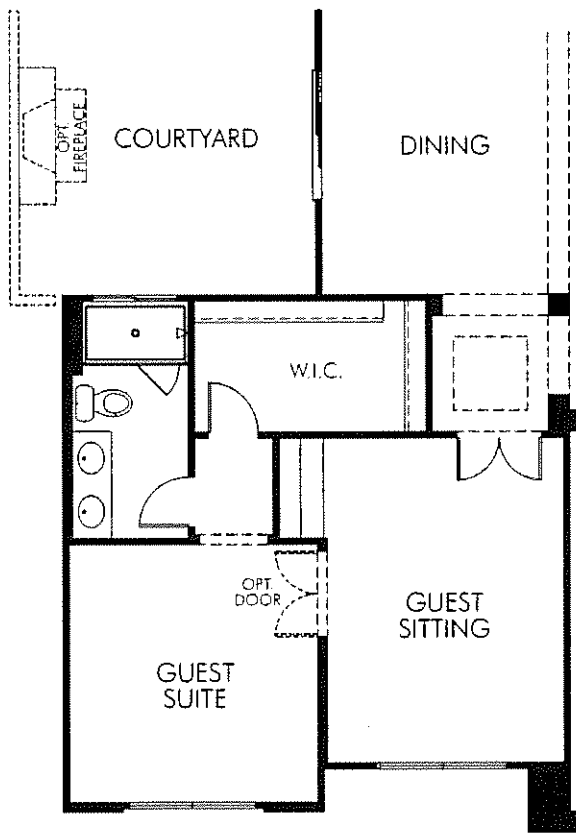


# SOLSTICE

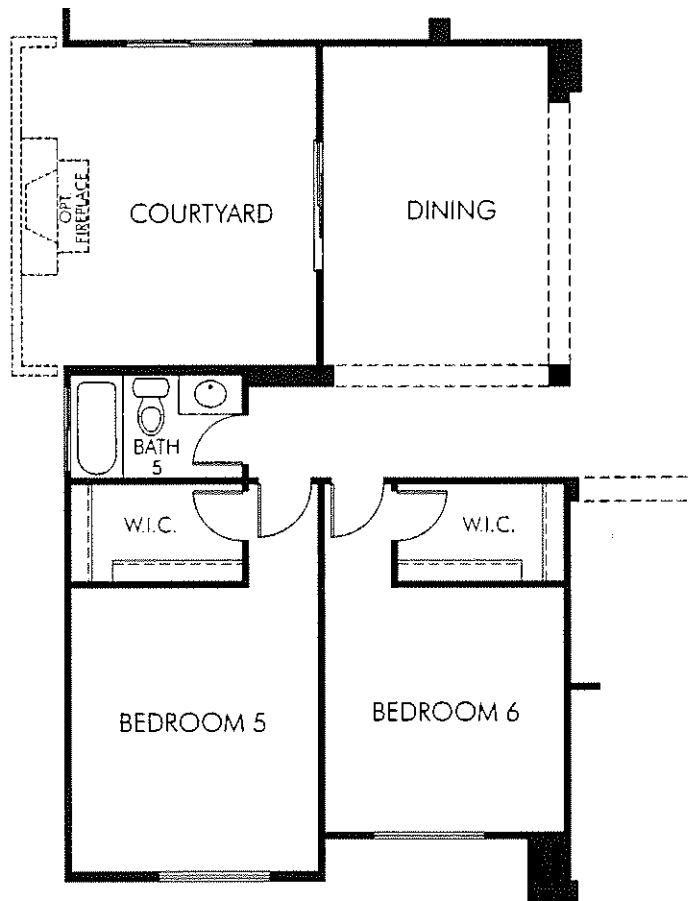
## THE HEMINGWAY

### OPTIONS

---



OPT. GUEST SUITE  
ILO BEDROOM 5 & DEN

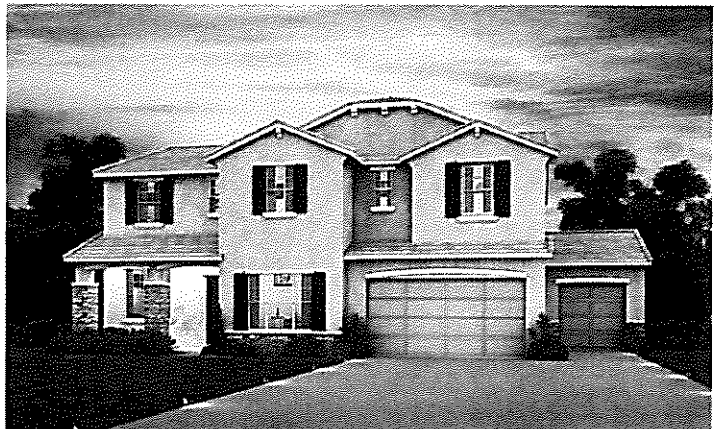


OPT. BEDROOM 6  
ILO DEN

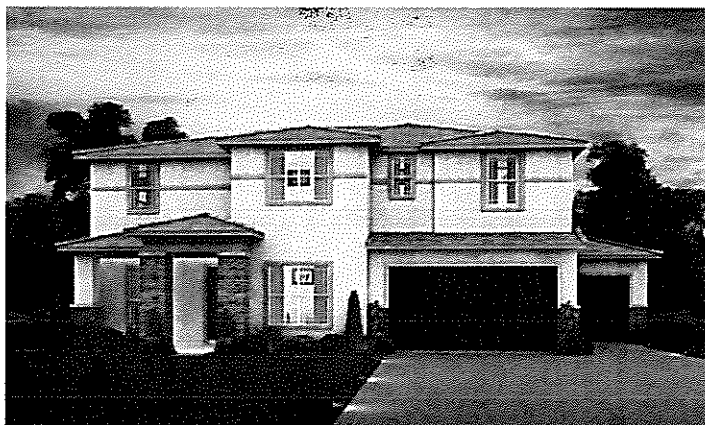
**THE MITCHELL**  
3,806 SQUARE FEET  
4 BED • 3.5 BATH • DEN • DINING • 4 BAY GARAGE



Elevation A



Elevation G



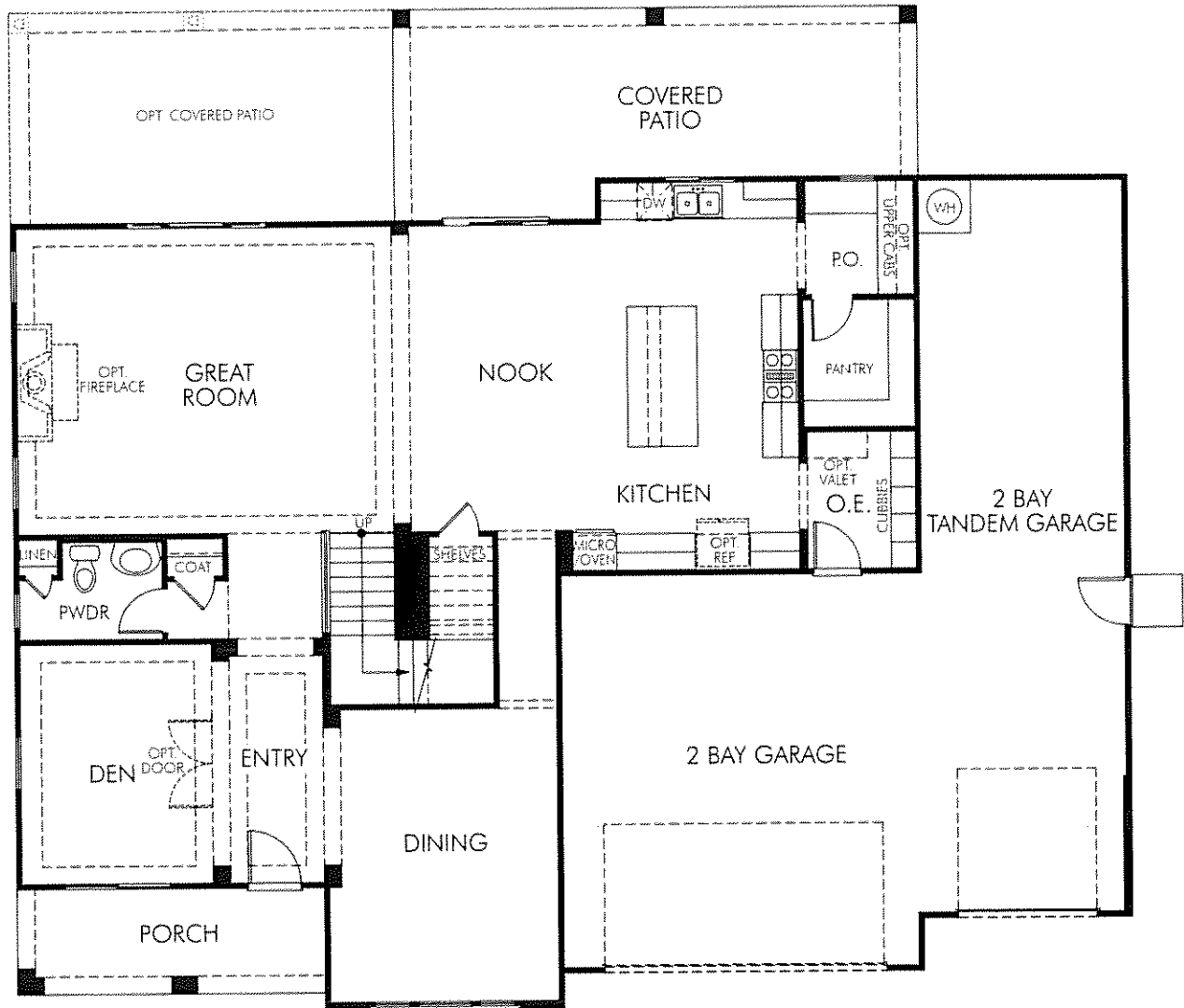
Elevation H

# SOLSTICE

## THE MITCHELL

### FIRST FLOOR

---



FIRST FLOOR PLAN

**SOLSTICE**  
THE MITCHELL  
SECOND FLOOR



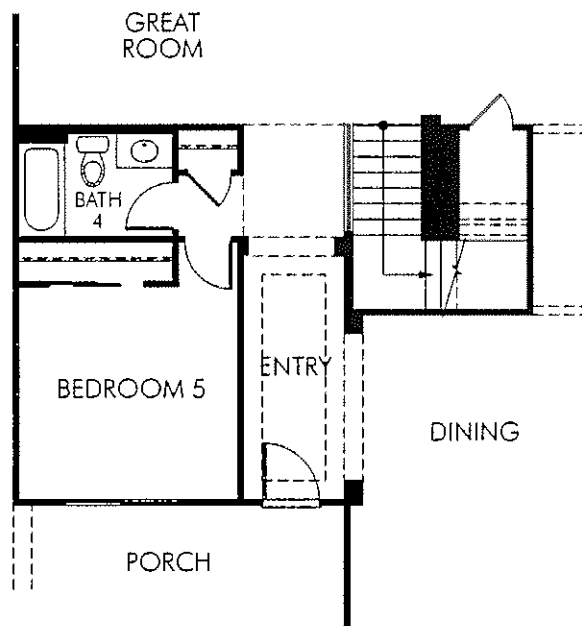
SECOND FLOOR PLAN

# SOLSTICE

## THE MITCHELL

### OPTIONS

---



OPT. BEDROOM 5/ BATH 4  
ILO DEN & POWDER

5571 Aspen Meadows Drive  
El Dorado Hills, CA 95762  
877 275 6374

COLSTICE

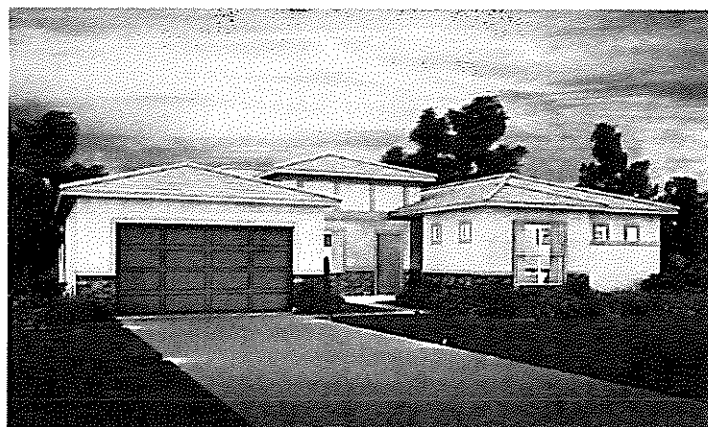
**THE LEE**  
2,762 SQUARE FEET  
3 BED • 2.5 BATH • DINING • DEN • 3 BAY TANDEM GARAGE



Elevation A



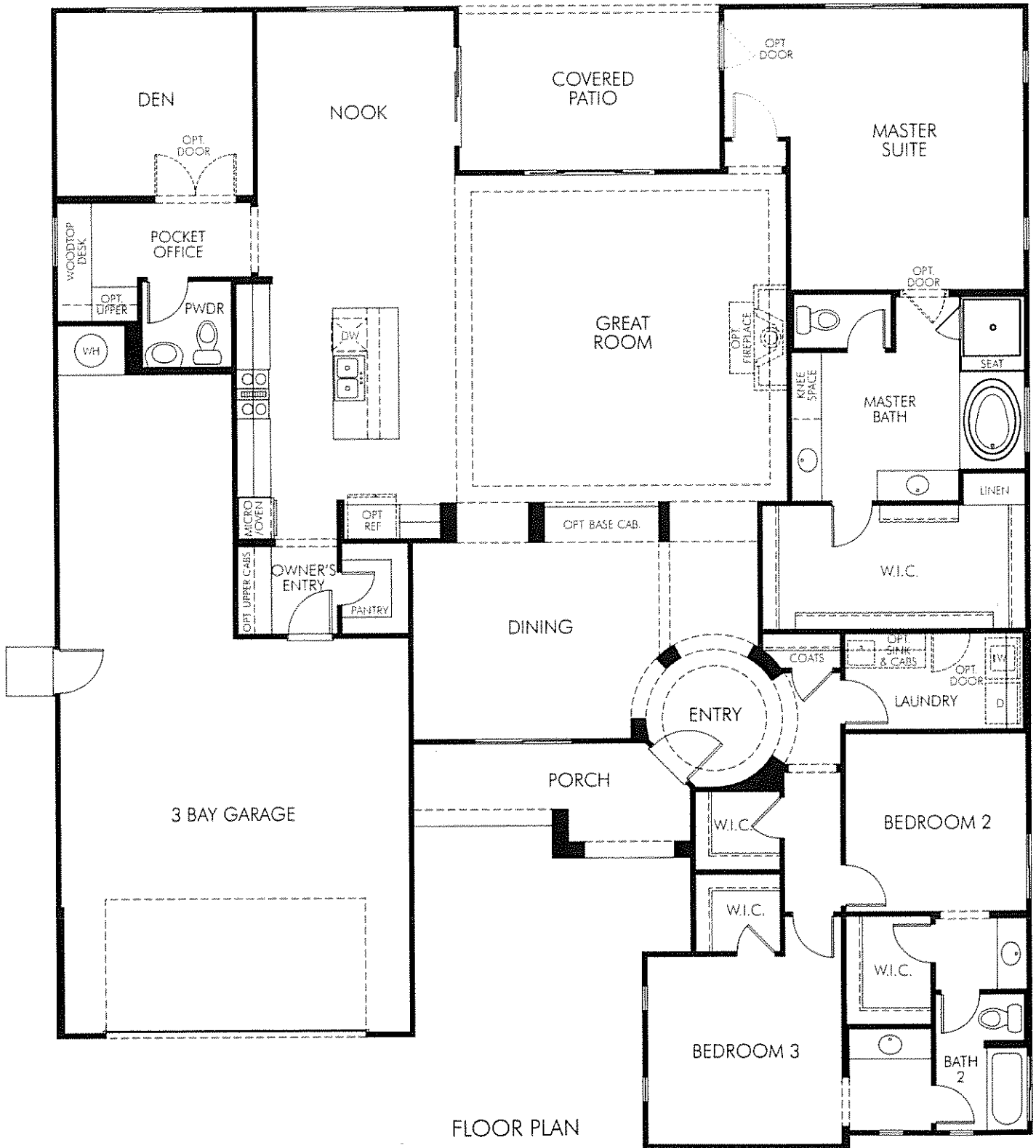
Elevation G



Elevation H

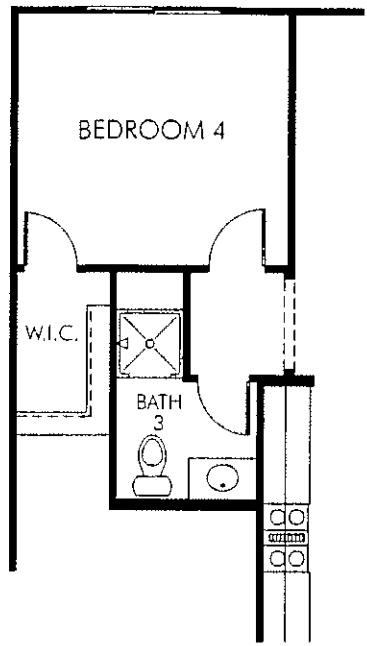
**SOLSTICE**  
THE LEE  
FIRST FLOOR

---

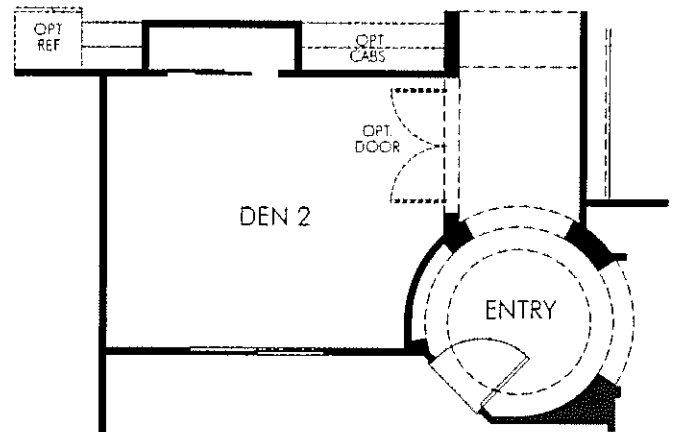


FLOOR PLAN

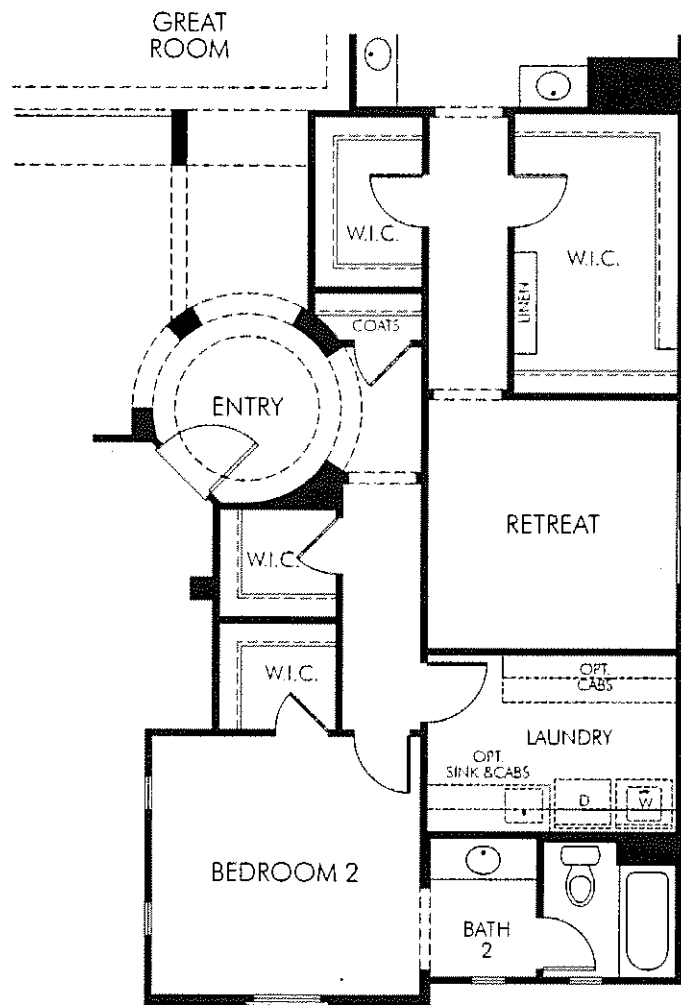
# SOLSTICE THE LEE OPTIONS



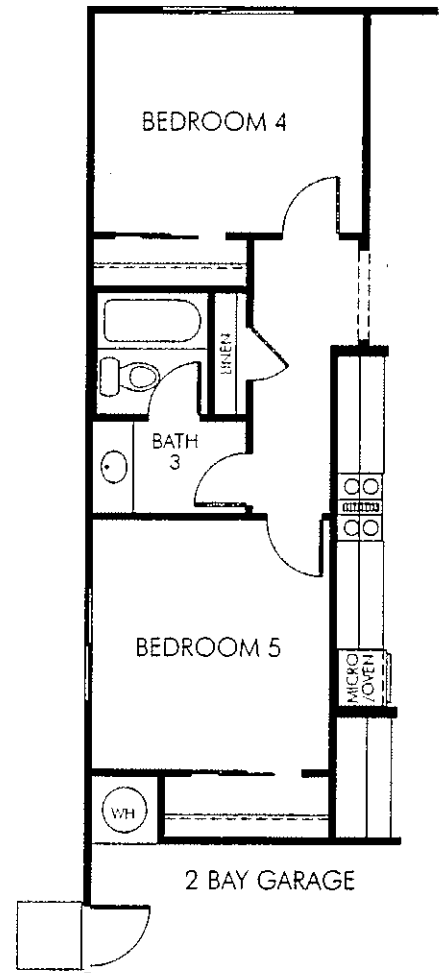
OPT. BEDROOM 4  
ILO DEN AND POWDER



OPT. DEN 2  
ILO DINING



OPT. MASTER RETREAT  
ILO BEDROOM 2



OPT. BEDROOM 5/BATH 3  
ILO 3 BAY GARAGE