



Residence 1

# DESIGNER AMENITIES

## DISTINCTIVE EXTERIORS

- Charming exteriors with designer-selected color palettes for enhanced streetscape and appeal
- Medium sand stucco finish
- Boral (MonierLife Tile) concrete tile roof
- Two-car garages with direct home access
- Sectional metal roll-up garage door to enhance exterior architecture (per elevation)
- Belt drive garage door for quiet operation
- Front landscaping designed to meet water conservation requirements
- Dual-pane, low-E vinyl windows with white-colored finish frames (grids per elevation and plan)
- Exterior porch lighting
- Two hose bibs (per plan)
- Complete rain gutters and downspouts

## KITCHEN HIGHLIGHTS

- Custom Maple cabinetry in a variety of stain choices with adjustable shelves and euro hinges
- Stainless steel single-bowl sink with Kohler kitchen pull out faucet
- Granite countertops with 6" splash, full height at range
- Kitchen island standard in all plans with granite countertop
- Pantry storage (walk-in pantry, per plan)
- Frigidaire brand stainless steel appliances
- Free-standing 5.0 cubic foot range with self-cleaning gas oven
- Microwave / hood
- Multi-cycle dishwasher
- 1/3 HP Insinkerator disposal
- Pre-plumbed for refrigerator ice-maker hookup
- Recessed canister lighting
- Undercabinet lighting

## LUXURIOUS MASTER BEDROOM SUITES

- Spacious walk-in closets
- Luxurious oval tubs (per plan)
- Maple cabinetry
- Compartmental water closet in Master Bath with elongated toilet
- Separate shower with glass enclosure
- Rectangle sink vanity in Master Baths
- Venetian Stone on shower walls and tub splash
- Designer-selected Kohler faucets
- Venetian Stone at all bath counters

## INTERIOR AMENITIES

- Wood laminate flooring at Entry and Kitchen
- Hand-set, 18 x 18 ceramic tile floors at selected areas (per plan)
- Plush, wall-to-wall carpeting throughout home in many color choices (per plan)
- Handsome, two-panel interior doors throughout
- Maple cabinetry throughout, including standard knobs
- Kwikset satin nickel lever door hardware
- Textured ceiling and walls throughout interior living space
- Designer enhanced-radius drywall corners
- Spacious walk-in closets in Master Bedroom
- 10' ceilings at first floor and 9' ceiling at second floor
- Ceiling fan pre-wire in Master Bedroom, Secondary Bedrooms, and Family Room
- 5-1/4" Coronado baseboards with Victorian door casings throughout
- Recessed canister lighting per plans
- Whole-house structured wiring, which includes telephone (CAT5) and cable television (RG6); at specified locations only
- Elegant, Venetian Stone bath countertops throughout
- Kohler faucets throughout
- Stair tread lights standard in all plans

## COMMUNITY AMENITIES

- 350 acres of trails and open space
- Recreation center including large gym, spa and children's play area
- Three pools
- Gathering area with kitchen and living room

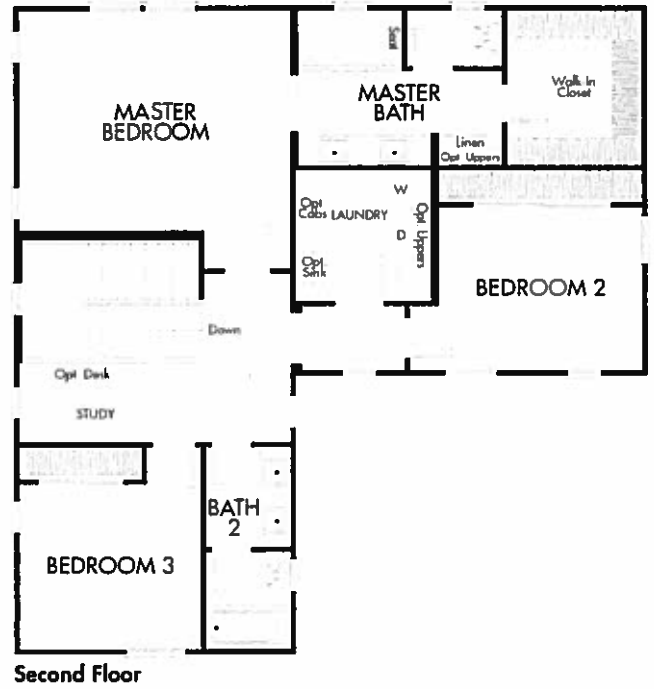
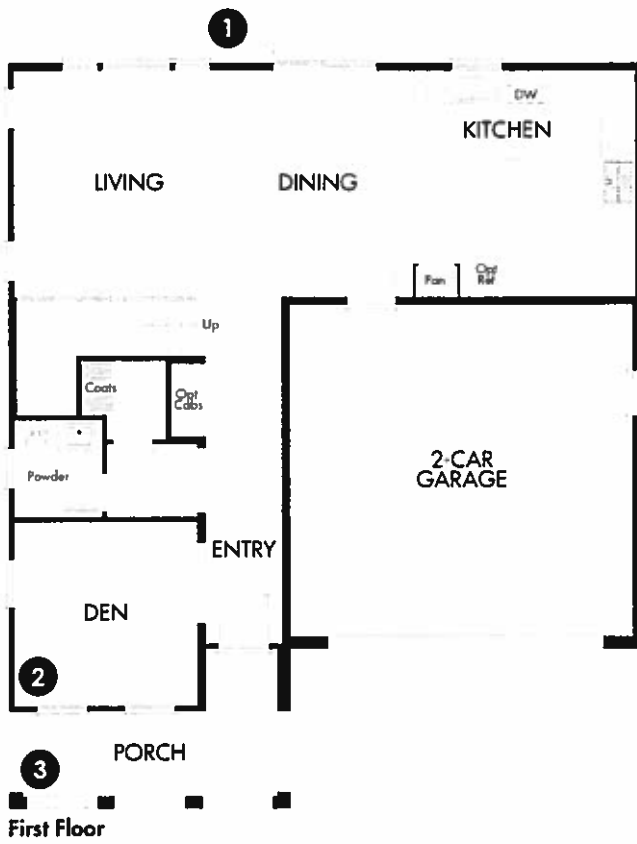
## ENERGY-SAVING FEATURES

- Solar 1.5 kW System and effects
- Energy-efficient central air conditioning and gas heating
- Weather stripping on exterior doors
- Energy-efficient, tankless water heater
- Fully insulated exterior walls and ceilings per Title 24
- Tempered sliding glass door (per plan)
- Dual-pane, low-E vinyl windows with white-colored finish frames (grids per elevation and plan)
- Set-back thermostats for temperature control
- Full garage finish with sheetrock, tape, and paint
- Recycled water for irrigation
- HVAC high efficiency 14 SEER & 12 EER
- Radiant barrier roof sheathing
- Gutter leaf guards for convenience

ChaparralNWHM.com

# Residence 1

3 BEDROOM / 2.5 BATH  
1,994 SQUARE FEET



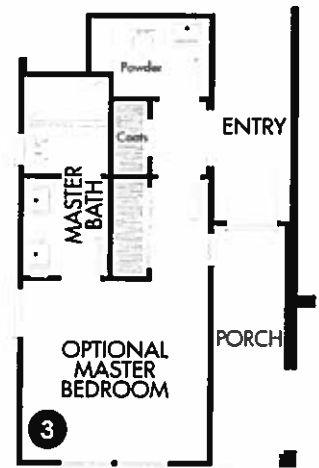
# Residence 1 Options



Optional California Room



Optional Bedroom 4/Bath 3



Optional Master Bedroom/Bath at First Floor



Residence 2

# DESIGNER AMENITIES

## DISTINCTIVE EXTERIORS

- Charming exteriors with designer-selected color palettes for enhanced streetscape and appeal
- Medium sand stucco finish
- Boral (MonierLife Tile) concrete tile roof
- Two-car garages with direct home access
- Sectional metal roll-up garage door to enhance exterior architecture (per elevation)
- Belt drive garage door for quiet operation
- Front landscaping designed to meet water conservation requirements
- Dual-pane, low-E vinyl windows with white-colored finish frames (grids per elevation and plan)
- Exterior porch lighting
- Two hose bibs (per plan)
- Complete rain gutters and downspouts

## KITCHEN HIGHLIGHTS

- Custom Maple cabinetry in a variety of stain choices with adjustable shelves and euro hinges
- Stainless steel single-bowl sink with Kohler kitchen pull out faucet
- Granite countertops with 6" splash, full height at range
- Kitchen island standard in all plans with granite countertop
- Pantry storage (walk-in pantry, per plan)
- Frigidaire brand stainless steel appliances
- Free-standing 5.0 cubic foot range with self-cleaning gas oven
- Microwave / hood
- Multi-cycle dishwasher
- 1/3 HP Insinkerator disposal
- Pre-plumbed for refrigerator ice-maker hookup
- Recessed canister lighting
- Undercabinet lighting

## LUXURIOUS MASTER BEDROOM SUITES

- Spacious walk-in closets
- Luxurious oval tubs (per plan)
- Maple cabinetry
- Compartmental water closet in Master Bath with elongated toilet
- Separate shower with glass enclosure
- Rectangle sink vanity in Master Baths
- Venetian Stone on shower walls and tub splash
- Designer-selected Kohler faucets
- Venetian Stone at all bath counters

## INTERIOR AMENITIES

- Wood laminate flooring at Entry and Kitchen
- Hand-set, 18 x 18 ceramic tile floors at selected areas (per plan)
- Plush, wall-to-wall carpeting throughout home in many color choices (per plan)
- Handsome, two-panel interior doors throughout
- Maple cabinetry throughout, including standard knobs
- Kwikset satin nickel lever door hardware
- Textured ceiling and walls throughout interior living space
- Designer enhanced-radius drywall corners
- Spacious walk-in closets in Master Bedroom
- 10' ceilings at first floor and 9' ceiling at second floor
- Ceiling fan pre-wire in Master Bedroom, Secondary Bedrooms, and Family Room
- 5-1/4" Coronado baseboards with Victorian door casings throughout
- Recessed canister lighting per plans
- Whole-house structured wiring, which includes telephone (CAT5) and cable television (RG6); at specified locations only
- Elegant, Venetian Stone bath countertops throughout
- Kohler faucets throughout
- Stair tread lights standard in all plans

## COMMUNITY AMENITIES

- 350 acres of trails and open space
- Recreation center including large gym, spa and children's play area
- Three pools
- Gathering area with kitchen and living room

## ENERGY-SAVING FEATURES

- Solar 1.5 kW System and effects
- Energy-efficient central air conditioning and gas heating
- Weather stripping on exterior doors
- Energy-efficient, tankless water heater
- Fully insulated exterior walls and ceilings per Title 24
- Tempered sliding glass door (per plan)
- Dual-pane, low-E vinyl windows with white-colored finish frames (grids per elevation and plan)
- Set-back thermostats for temperature control
- Full garage finish with sheetrock, tape, and paint
- Recycled water for irrigation
- HVAC high efficiency 14 SEER & 12 EER
- Radiant barrier roof sheathing
- Gutter leaf guards for convenience

ChaparralNWHM.com

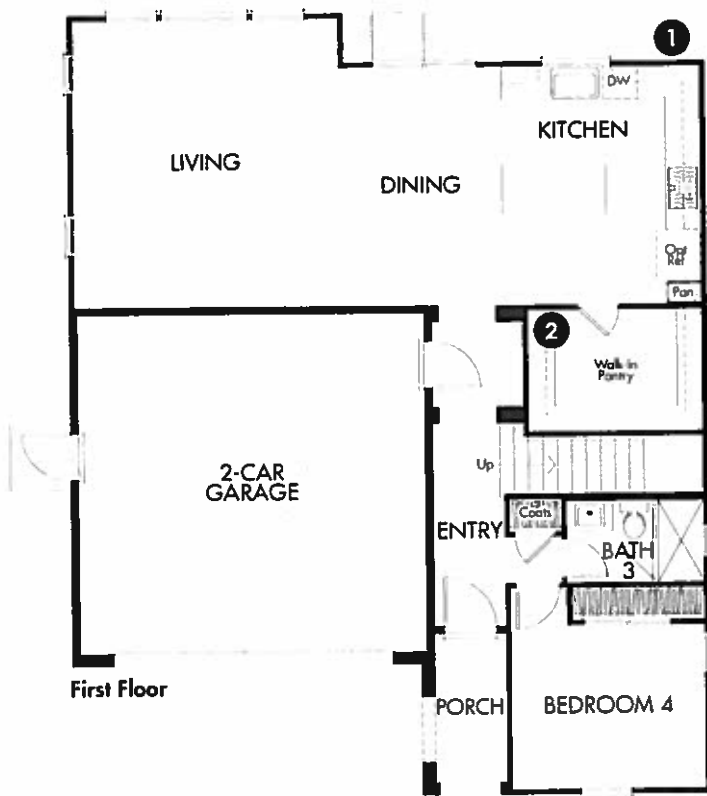


June 2015. Continuing a policy of constant research and development, The New Home Company reserves the right to change price, design, and specifications without prior notice or obligation. Square footages are approximations only. Size, number, utility closets and location of windows, front entries and doors vary per elevation and home site location. All information subject to change. All imagery is representational and does not depict specific building or future amenity details. Views vary per homesite location. All information subject to change. #RE License# 01870227

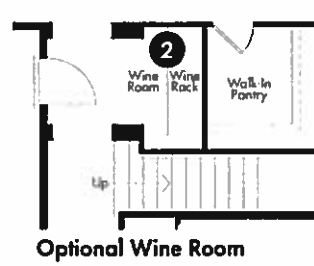


# Residence 2

4 BEDROOM / 3 BATH  
2,194 SQUARE FEET



# Residence 2 Options







Residence 3

# DESIGNER AMENITIES

## DISTINCTIVE EXTERIORS

- Charming exteriors with designer-selected color palettes for enhanced streetscape and appeal
- Medium sand stucco finish
- Boral (MonierLife Tile) concrete tile roof
- Two-car garages with direct home access
- Sectional metal roll-up garage door to enhance exterior architecture (per elevation)
- Belt drive garage door for quiet operation
- Front landscaping designed to meet water conservation requirements
- Dual-pane, low-E vinyl windows with white-colored finish frames (grids per elevation and plan)
- Exterior porch lighting
- Two hose bibs (per plan)
- Complete rain gutters and downspouts

## KITCHEN HIGHLIGHTS

- Custom Maple cabinetry in a variety of stain choices with adjustable shelves and euro hinges
- Stainless steel single-bowl sink with Kohler kitchen pull out faucet
- Granite countertops with 6" splash, full height at range
- Kitchen island standard in all plans with granite countertop
- Pantry storage (walk-in pantry, per plan)
- Frigidaire brand stainless steel appliances
- Free-standing 5.0 cubic foot range with self-cleaning gas oven
- Microwave / hood
- Multi-cycle dishwasher
- 1/3 HP Insinkerator disposal
- Pre-plumbed for refrigerator ice-maker hookup
- Recessed canister lighting
- Undercabinet lighting

## LUXURIOUS MASTER BEDROOM SUITES

- Spacious walk-in closets
- Luxurious oval tubs (per plan)
- Maple cabinetry
- Compartmental water closet in Master Bath with elongated toilet
- Separate shower with glass enclosure
- Rectangle sink vanity in Master Baths
- Venetian Stone on shower walls and tub splash
- Designer-selected Kohler faucets
- Venetian Stone at all bath counters

## INTERIOR AMENITIES

- Wood laminate flooring at Entry and Kitchen
- Hand-set, 18 x 18 ceramic tile floors at selected areas (per plan)
- Plush, wall-to-wall carpeting throughout home in many color choices (per plan)
- Handsome, two-panel interior doors throughout
- Maple cabinetry throughout, including standard knobs
- Kwikset satin nickel lever door hardware
- Textured ceiling and walls throughout interior living space
- Designer enhanced-radius drywall corners
- Spacious walk-in closets in Master Bedroom
- 10' ceilings at first floor and 9' ceiling at second floor
- Ceiling fan pre-wire in Master Bedroom, Secondary Bedrooms, and Family Room
- 5-1/4" Coronado baseboards with Victorian door casings throughout
- Recessed canister lighting per plans
- Whole-house structured wiring, which includes telephone (CAT5) and cable television (RG6); at specified locations only
- Elegant, Venetian Stone bath countertops throughout
- Kohler faucets throughout
- Stair tread lights standard in all plans

## COMMUNITY AMENITIES

- 350 acres of trails and open space
- Recreation center including large gym, spa and children's play area
- Three pools
- Gathering area with kitchen and living room

## ENERGY-SAVING FEATURES

- Solar 1.5 kW System and effects
- Energy-efficient central air conditioning and gas heating
- Weather stripping on exterior doors
- Energy-efficient, tankless water heater
- Fully insulated exterior walls and ceilings per Title 24
- Tempered sliding glass door (per plan)
- Dual-pane, low-E vinyl windows with white-colored finish frames (grids per elevation and plan)
- Set-back thermostats for temperature control
- Full garage finish with sheetrock, tape, and paint
- Recycled water for irrigation
- HVAC high efficiency 14 SEER & 12 EER
- Radiant barrier roof sheathing
- Cutter leaf guards for convenience

ChaparralNWHM.com

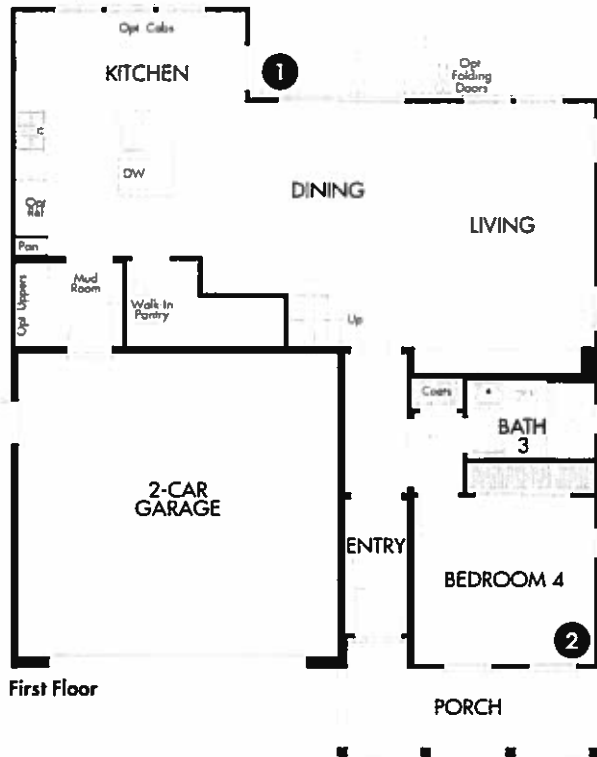


June 2015. Continuing a policy of constant research and development, The New Home Company reserves the right to change price, design, and specifications without prior notice or obligation. Square footages are approximations only. Size, number, utility closets and location of windows, front entries and doors vary per elevation and home site location. All information subject to change. All imagery is representational and does not depict specific building or future amenity details. Views vary per homesite location. All information subject to change. BRE License# 01870227

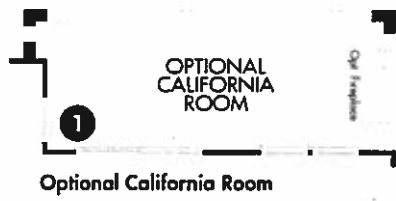


# Residence 3

4 BEDROOM / 3 BATH  
2,422 SQUARE FEET



# Residence 3 Options





- Residence 1
- Residence 2
- Residence 3

